

ARCHITECTURAL MOLDING BITS

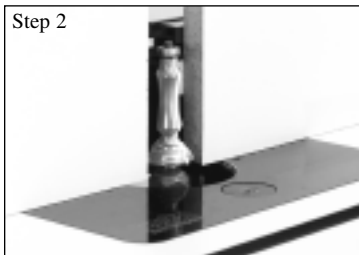
#068



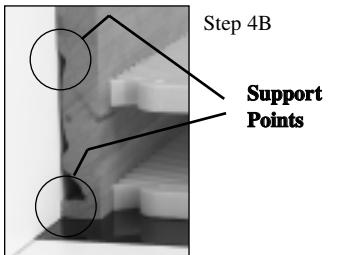
Step 1



Step 4A

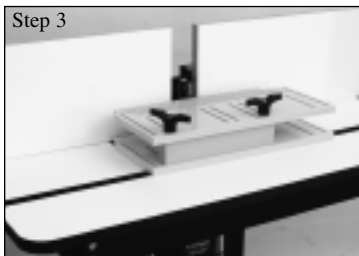


Step 2

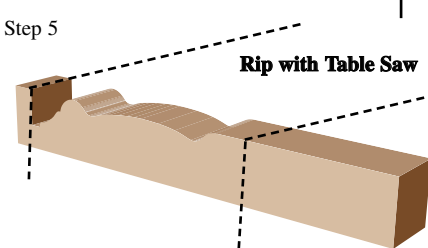


Step 4B

Support Points



Step 3



Step 5

Rip with Table Saw



Helpful Hint:

When cutting architectural molding bits, we suggest using the technique below to provide added support to achieve a smooth cut with a safe setup.

Router Table Requirements:

- Split Fence
(depending on router bits cutting length)
- Vertical Fence Boards
- Featherboards
- Featherboard Raisers

Step 1: Place bit in router chuck, and set height with 3/16" material below cutters edge.

Step 2: Place vertical fence boards on router fence and set profile reveal. For best results, use multiple passes to achieve final cutting depth, adjusting featherboards and fence as needed.

We used two vertical fence melamine boards each measuring 3/4" thick x 7" tall x 18-1/2" long, attached with double face tape to router fence.

Step 3: Place Featherboards with Raisers.

Step 4 (A & B): This step shows the support above and below profile. Run material as shown.

Step 5: Rip stock to desired profile area.



Double Face Tape

447-7150 3/4" x 108 ft.

447-7151 1" x 108 ft.

447-7155 2" x 108 ft.