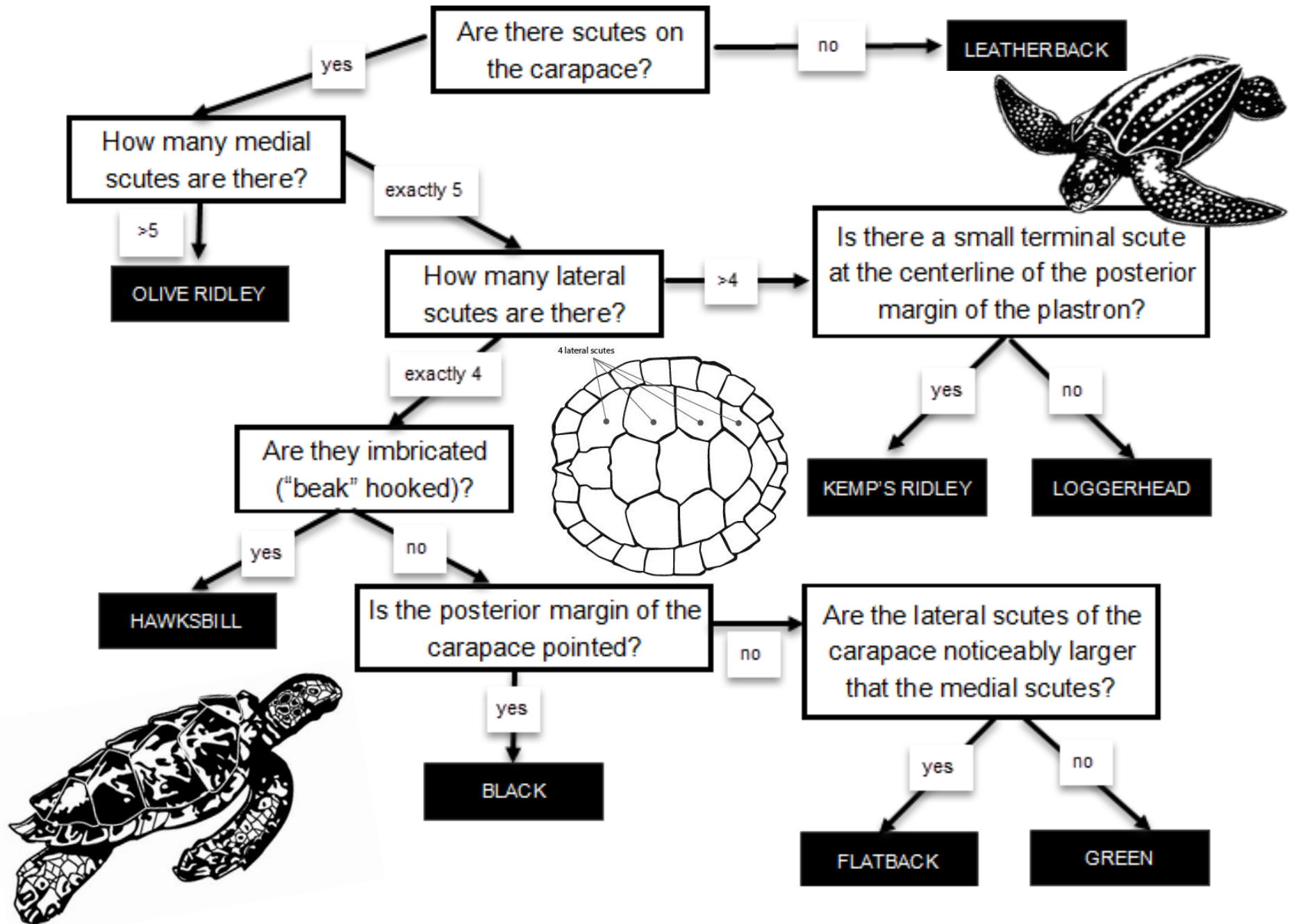


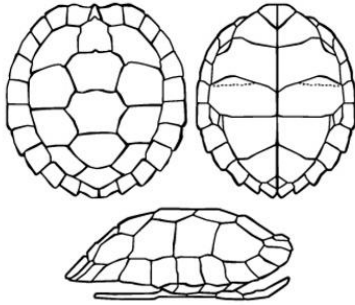
Turtle Sorting Decision Tree



Turtle Sorting Vocabulary

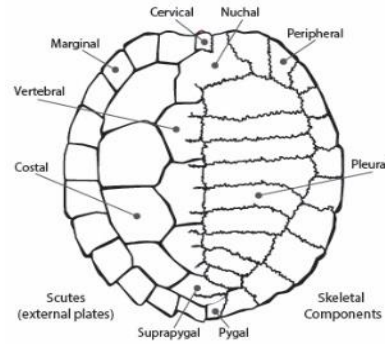
Scute

a bony, external plate



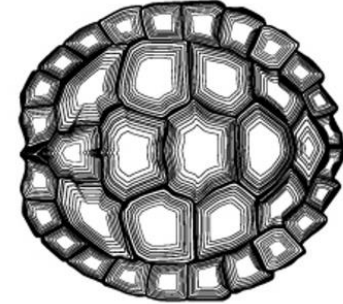
Marginal

on the edge



Carapace

top of shell



Medial

middle

Posterior

back/rear end

Lateral

side

Terminal

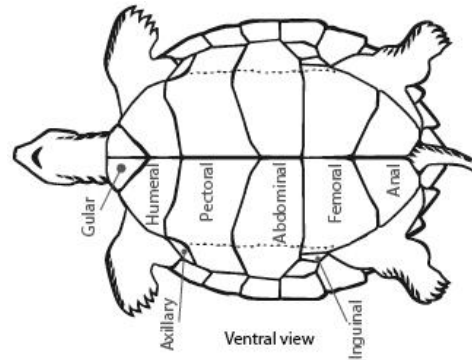
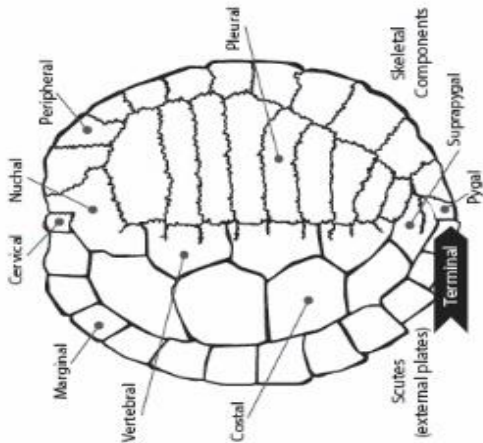
end

Plastron

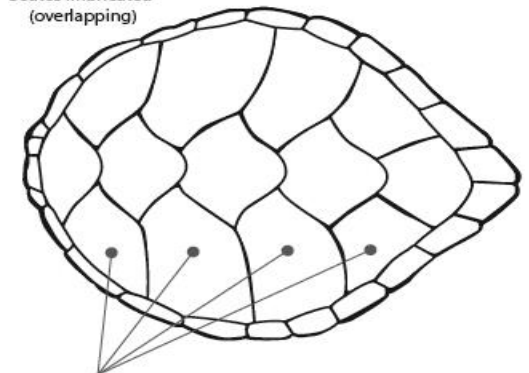
underside of shell

Imbricated

overlapping in a pattern



Scutes imbricated (overlapping)



Turtle Sorting Answers

1	2	3	4
5	6	7	8