



SERRV™

Eco-friendly ideas
for indoors & out

It's easy being /
green.

Summer 2022

Crafting relationships for over 70 years

Since 1949, SERRV has partnered with global artisans & farmers to bring you colorful handmade garden décor.



PEACE WREATH
Made from natural galtang vine and takip-asin wood by artisans in the Philippines
Partners since: 1976

CARDINAL BIRDHOUSE
Natural gourds from Peru
Partners since: 1991



ARIBO BIRDHOUSE
Banana leaf & recycled sari from Bangladesh
Partners since: 2008



NEW! RAINBOW RIDE GARDEN STAKE
Made with partially recycled metal from Moradabad, India
Partners since: 2011

We're not your everyday retailer.

At SERRV, we don't chase the hottest trend, the lowest price, or the fastest delivery. For 72 years, in fact, we've focused on something else entirely.

With few opportunities for income, small-scale artisans and farmers around the world need a **long-term trading partner**. SERRV International has been that partner. Year after year, we work with artisan communities in 24 countries to create a beautifully fairer economy.

Here's what that looks like!

A big market for small producers

Without ways to market their handcrafts, our global artisan partners are able to rely on SERRV to **bring their products to North America**.

Celebration of culture & handcraft

With a deep understanding of the traditions, skills, and resources of each artisan partner, we're able to design products that uniquely **enhance our lives with global artistry**.

Investment in the future

With our reliable orders and advance payments, artisans and farmers don't just earn income; they're able to **fund healthcare, education, and thriving communities**.

Every purchase helps SERRV sustain these long-standing partnerships around the world. **Thank you!**

SERRV
INTERNATIONAL

FEATURED INSIDE:

- | | | |
|--|---|--|
| 4 Home
Baskets, Bedding,
Throws, Décor, & More | 20 Global Food
Soups, Spices,
Coffee, Tea, & More | 32 Fashion
Jewelry, Handbags,
Scarves, & Apparel |
| 16 Gift Baskets
Ethical Gifts &
Gift Sets | 22 Kitchen
Textiles, Tabletop,
& Serveware | 46 Outdoor/Garden
Wind Chimes, Garden
Stakes, Birdhouses, &
Décor |
| 18 Breadwarmers
Terracotta Bread
Baskets & Gift Sets | 30 Wellness
At-Home Spa, Soaps,
Chocolate, & More | |



a better
world
in the
making®

Due to COVID-19, some products have been delayed. Thanks for your patience, and for your critical support of our artisan and farmer partners.

Recycled Sari

Colorful cotton clothing from South Asia is upcycled into one-of-a-kind accents.

A

KANTHA KITCHEN TEXTILES

Recycled cotton saris are layered and hand-stitched with kantha embroidery. Each one is unique—let us choose for you! Towels, cloths, and pot holder feature hanging loops.

Machine wash cold, line dry. *India & Bangladesh*

A 46345 NEW Upcycled Sari & Denim Apron

Features recycled denim accents. Two pockets on front. Adjustable 140"l neck/waist strap.

One size fits most. 31"l x 23"w \$32

B 34902 Dish Towels, Set of 3

Two layers. Absorbent and quick drying.

25½"l x 19½"w \$32

C 46234 Napkins, Set of 4 18"sq \$26

D 34897 Dishcloths, Set of 3 11½"sq \$15

E 33366 Pot Holder 8"sq \$18

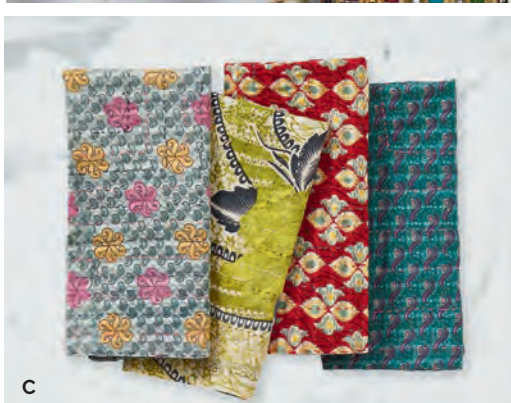
F 32791 NEW Reusable Bowl Covers, Set of 2

Easy-to-clean plastic lining; elastic stretch.

Small: 7" dia; Large: 9" dia \$22

G CHINDI WRAP TRIVETS, SET OF 2

These colorful trivets are handwoven from coiled kaisa grass wrapped in recycled sari fabric. Colors and patterns vary. 7" dia *Bangladesh* 46158 \$10



KANTHA BEDDING

Recycled sari is layered and embellished with hand-stitched kantha embroidery for soft texture and cozy warmth. Reversible. Each is completely unique. Machine wash cold, line dry. 100% cotton. *India*

H 34904 Queen Size Cool Bedcover

Three layers; primarily cool tones.

96"l x 92"w \$148

I 34890 Queen Size Patchwork Quilt

Seven layers. 96"l x 92"w \$215

33483 NEW King Size Patchwork Quilt

Seven layers. 108"l x 92"w \$262

J 32298 Twin Size Patchwork Bedcover

Three layers. 90"l x 68"w \$84

32816 NEW Patchwork Standard Pillow

Shams, Set of 2 Not pictured.

Coconut button closures. 26"l x 20"w \$68

K 32814 NEW Patchwork King

Pillow Shams, Set of 2

Coconut button closures. 36"l x 20"w \$82

L 34712 Cool Patchwork Square Throw

Two layers; primarily cool tones. 56"sq \$65

M 34358 Rainbow Square Throw

Three layers. 56"sq \$65

N 32137 Patchwork Square Pillow

Side zip closure. Insert included. 18"sq \$42

KANTHA TRAVEL ACCESSORIES

Handmade from recycled saris. Vinyl lining on interior. Zip-top closure. Sari colors will vary. Cotton. *India*

O 32272 Toiletries Bag

6½"h x 10½"w x 3½"d \$24

P 32271 Makeup Bag

5"h x 8"w x 2½"d \$18

Q LONG MULTI NECKLACE

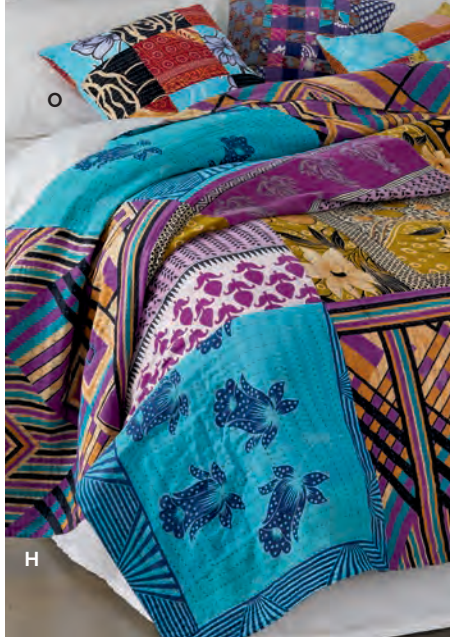
Every bead of this jewelry piece is hand wrapped with recycled cotton sari and interspersed with tiny brass beads. Colors and patterns will vary. Wear long or doubled. Lobster clasps. Brass accents. Adjustable from 51"–54"l *India* 32443 \$28

R REMNANT SOFT-SIDED BASKETS, SET OF 3

Each one-of-a-kind soft-sided nesting basket is hand woven from recycled sari, with a jute rope base and a fun natural fringe on one side. Sm: 9" h x 8½" dia; Med: 10" h x 10" dia; Lg: 12" h x 12" dia Bangladesh 46285 \$54

S POP TOP CHINDI BASKETS, SET OF 2

These baskets get a pop of color from sections of upcycled cotton saris. Handwoven from natural kaisha grass with flat fitted lid. Sari colors vary. Sm: 14" h x 11" dia; Lg: 17" h x 16" dia Bangladesh 46173 \$72



CHINDI KAISHA GRASS BASKETS

Artisans wrap upcycled sari fabric, also known as chindi, and cotton string around kaisha grass to craft these sturdy baskets. Each comes with matching handwoven lid. Sari colors vary. Bangladesh

T 46270 Rectangular, Set of 2
Inset handles. Sm: 10½" l x 15" w x 11½" h;
Lg: 13" l x 18" w x 15" h \$68

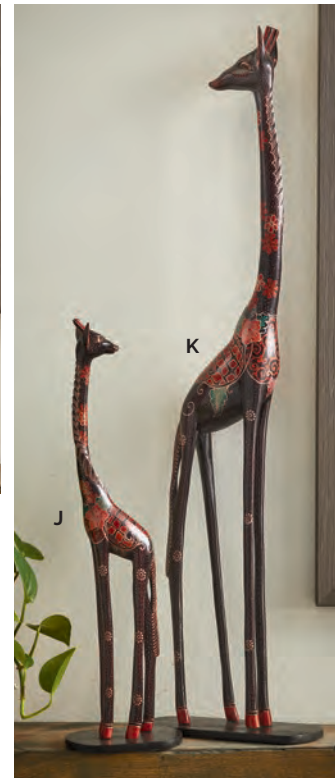
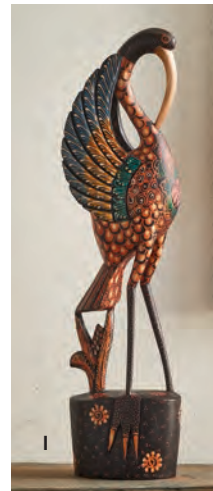
U 46171 Laundry 19" h x 16" dia \$68

V 46170 Round, Set of 2
Sm: 5" h x 12" dia; Med: 7" h x 13" dia \$48



Destination: *Home*

Handmade comfort
from around the world



KALAMKARI REVERSIBLE PILLOWS

These pillows are made from block-printed kalamkari fabric using all-natural vegetable dyes. Each pillow features distinctly different patterns on each side. Hidden zipper. Insert included. 100% cotton. 18"sq India \$35

A 32817 Paisley & Lotus

B 32815 Compass & Meadow



KALAMKARI PATCHWORK BEDDING

Hand block-printed patterns created with all natural vegetable dyes. Reverse is single pattern. Shams feature coconut button closures. Quilts and throw made with three layers. 100% cotton. Machine wash cold, tumble dry. *India*

C 32818 Patchwork Throw

60"l x 50"w \$84

D 32759 Queen Quilt

92"l x 96"w \$188

33448 King Quilt

108"l x 92"w \$210

E 32760 Standard Pillow Shams,

Set of 2 26"l x 20"w \$56

33449 King Pillow Shams,

Set of 2 36"l x 20"w \$75

F HOGLA ELEPHANT BASKET

Made of natural hogla rope and leaves, complete with black jute eyes and hogla rope tail.

9¾"h x 11¼"w x 15¾"l *Bangladesh*

46286 \$54

HOGLA VASES

Rustic décor perfect for handmade flowers. Made of hogla rope and leaves that provide wonderful texture. Vases are not watertight, 4¾" dia openings.

Bangladesh

G 46288 Tall 15¾"h x 7" dia \$36

H 46289 Round 9"h x 11½" dia \$32

BATIK ANIMAL DÉCOR

These sculptural pieces are hand carved from a single piece of sengan wood, batiked with spots and traditional floral patterns, and lightly finished. Wooden bases for stability. *Indonesia*

I 37809 Small Bali Brown Ibis

16¼"h x 2½"w x 4" d \$65

J 37810 Small Kembani Giraffe

19"h x 1½"w x 3" d \$60

K 37811 Kembani Giraffe

32"h x 2¼"w x 5" d \$120

L TIGER STRIPE CERAMIC POTS, SET OF 2

Handmade stoneware planters feature tan and brown natural marbled stripes and a finished beige interior. No drainage hole. Watertight. Succulents not included. Sm: 3"h x 3" dia; Lg: 3¾"h x 3¾" dia *Nepal* **65819 \$42**

M RUSTIC WALLFLOWERS, SET OF 3

Each flower set is made of sustainable takip-asin wood and brightly dyed. Attached jute hanging loops. Sm: 8" dia; Med: 10" dia; Lg: 13¾" dia *Philippines* **74493 \$42**

BOLGATANGA WALL BASKETS

Each elephant grass wall basket helps women weavers in Ghana earn vital income. Due to handmade nature, size, shape, and color may vary. Leather hanging loop. *Ghana*

N 25147 Komombo Basket

1½"h x 13½" dia \$48

O 25148 Kwasi Basket 1½"h x 15" dia \$52

DONATE TODAY.

Trading fair for over 70 years!

Your tax-deductible donation*

makes a direct impact on fair trade artisans, farmers, and their families.

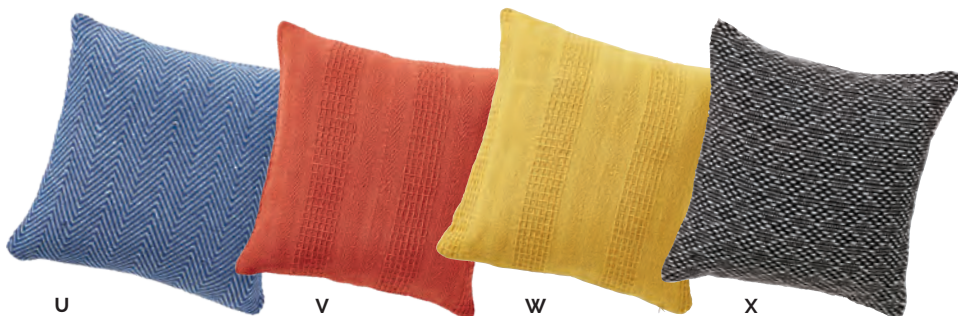
Visit serrv.org/donate

*Visit serrv.org/donate for financial and regulation information.



Second time's the charm

Recycled clothing makes cozy throws & pillows



RETHREAD COTTON TROWS

The ultimate in sustainable comfort, these throws are made from washed and recycled clothing, which is unraveled, cleaned, and re-woven to create soft, lightweight throws. Knotted fringe ends. Pair with a matching pillow! Machine wash. 60% cotton/40% polyester blend. 60"l x 50"w *India* **\$34**

P 32592 Brick

Q 33299 Blue Chevron

R 33296 Mustard

S 33297 Azure

T 33300 Gold Chevron

RETHREAD COTTON PILLOWS

Our popular Rethread Throws in pillow form! Made from recycled clothing. Hidden zipper. Machine wash. Insert included. 60% cotton, 40% polyester blend. 18"sq *India* **\$30**

U 32792 Blue Chevron

V 32794 Brick

W 32796 Mustard

X 32802 Black Diamond

Shop our complete collection of fair trade products at serrv.org 7

Natural order

Eco-friendly
shelf storage



Partnering with SERRV since 2008, handcrafters in Bangladesh create income for women with few job opportunities.



BADAM STORAGE BASKETS

Stylish and sustainable baskets made from banana leaves make a perfect alternative to plastic! Light brown and natural baskets feature wire frames for shape and durability. *Bangladesh*

A 46325 Cube 11"sq \$36

B 46326 Nesting, Set of 4

Rectangular baskets feature cutout handles.

Sm: 6"sq each; Med: 13"l x 9"w x 6"h;

Lg: 16"l x 10"w x 7"h \$74

CHINDI WRAP BASKETS

Handwoven kaisa grass baskets wrapped in vibrant recycled sari make for colorful storage. Colors and patterns vary. *Bangladesh*

C 46223 Nesting, Set of 3

Sm: 3"l x 8½"w x 6"h; Med: 4½"l x 10"w x 8"h;

Lg: 5"l x 12½"w x 9"h \$30

D 46165 Small 8"l x 10"w x 8"h \$15

E 46093 Large 11"l x 14"w x 11"h \$34

KATRA SARI STORAGE BASKETS

Colorful and sustainable storage, each of these woven baskets is made from sturdy hogla interwoven with strips of recycled sari. Colors and patterns vary. *Bangladesh*

F 46311 Cube 11"sq \$32

G 46312 Nesting, Set of 4

Rectangular baskets feature cutout handles.

Sm: 6"sq each; Med: 13"l x 9"w x 6"h;

Lg: 15"l x 10¼"w x 7"h \$62

H SARI HOGLA BASKETS, SET OF 2

NEW Natural hogla is wrapped with recycled sari to bring a pop of color to these durable nesting baskets that will look great in any room.

Sturdy handles. Colors and patterns of sari will vary. Sm: 10"h x 11½"dia; Lg: 14"h x 17"dia *Bangladesh* 46347 \$74

RAFFIA PLANT BASKETS

These handwoven planter covers are made by rural women artisans in Uganda who earn a living through traditional handcrafts using natural and hand-dyed raffia. Covers not watertight. Due to handmade nature, colors may vary. Not recommended for outdoor use. *Uganda*

I 91136 Kukua 6"h x 9"dia \$36

J 91145 Matope 9"h x 9"dia \$36

HOGLA TWO-TONE BASKETS

Natural handmade hogla leaf baskets get a touch of contemporary style with soft, braided black-and-white jute fiber. Flexible construction with reinforced handles. *Bangladesh*

K 46168 Large 9"h x 17"dia \$38

L 46169 Set of 2

Sm: 7"h x 12"dia; Med: 8"h x 14"dia \$50



As green as grass

Biodegradable grasses
and plant fibers make
these handmade baskets
both eco-friendly and
one-of-a-kind.



NATURAL HOGLA BASKETS

Natural, neutral baskets that will match any décor. Made of natural hogla rope and leaves that provide wonderful texture. *Bangladesh*

M 46242 Nesting, Set of 3

Sm: 10" h x 10½" dia; Med: 12" h x 13" dia; Lg: 12½" h x 14" dia \$82

N 46243 Laundry

Liner not included. 19" h x 16" dia \$74

O 46346 NEW Wastebasket

11" h x 8½" dia \$26

P DOCKSIDE BASKETS, SET OF 2

Bring the dock to you with these beautiful baskets! Handwoven hogla nesting baskets have sturdy handles and two-tone crisscross rope accents. Ideal for storage in any room. Sm: 12" h x 12" w, handles 9" l; Lg: 15" h x 15" w, handles 10¾" l *Bangladesh* 46274 \$84

BOLGATANGA DÉCOR BASKETS

Perfect for all kinds of home décor, each elephant grass planter helps women weavers in Ghana earn a sustainable income while crafting with traditional

techniques and patterns. Due to their handmade nature, size, shape, and color may vary widely. Not watertight. Not recommended for outdoor use. In order to ship more efficiently, our artisan partners fold some of these baskets for packing. To remove creases, slightly dampen the basket, reshape, and air dry. See serrv.org for additional instructions. *Ghana*

Q 25145 Savannah Sunset Plant, Set of 2

Sm: 6" h x 6" dia; Lg: 8" h x 8" dia \$58

R 25106 Ocean Nesting, Set of 2

Sm: 10½" h x 13" dia; Lg: 14½" x 14" dia \$142

A CORN HUSK SUNFLOWERS, SET OF 3

These beautiful flowers will stay fresh all year long! Artisans in the Philippines craft these detailed blooms from dried corn husks, carefully cutting and dyeing each petal and leaf. Adjustable wire stems and petals. 17" h Philippines 74503 \$34

MANGO WOOD VASES

These vases can be displayed as statement pieces or artfully arranged with dry flowers, grasses, or berry-studded branches. Formed from layered mango wood, joined and turned for a smooth finish. Not watertight. India

B 32571 Bulb 6" h x 7½" dia \$46

C 32570 Oval 8½" h x 7½" dia \$50



RETHREAD COTTON TEXTILES

The ultimate in sustainable comfort, these throws are made from recycled clothing, which create soft, lightweight throws. Knotted fringe ends. Machine wash. 60% cotton/40% polyester blend. India

D 32798 Natural Stripe Pillow
Insert included. 18" sq \$30

E 32800 Gray Diamond Pillow
Insert included. 18" sq \$30

F 32588 Natural Stripe Throw
60" l x 50" w \$34

G 32594 Gray Diamond Throw
60" l x 50" w \$34

H SOLA MIXED BOUQUET

Each bamboo stem features detailed cream-colored sola flowers and copper leaves with assorted textured centers. Bouquet includes 10 stems. Longest stem: 18½" h India 33335 \$34

CUTOUT IRON LANTERNS

Warm light glows through the intricate cutout patterns of these handmade, partially-recycled iron lanterns. Pair with LED tea light or votive (not included). India

I 32310 Large River Birch Lantern
10" h x 5" dia \$24

J 34509 Medium River Birch Lantern
6" h x 4" dia \$20

K 33338 River Birch Tea Lights, Set of 4
2½" h x 2½" dia \$18

L 32572 Iron Mandala Lanterns, Set of 3
Sm: 4" h x 3½" dia; Med: 6" h x 4" dia;
Lg: 8" h x 4½" dia \$45

M WELCOME WORD ART

NEW Artisans in India hand carve sustainable mango wood into beautiful, flowing script to create a rustic piece of home décor. Perfect for a foyer or mantel! 4" h x 16¼" w x ¾" d India 33453 \$22

N SAMADRA SANDS BASKETS, SET OF 3

This set of jute and hogla woven nesting baskets provide sustainable storage for your home. Sm: 4¼" h x 4¾" dia; Med: 5" h x 6¼" dia; Lg: 5½" h x 7½" dia Bangladesh 46287 \$34



SEASHORE BASKETS

Kaisha grass baskets are woven with synthetic raffia ribbon in beachy tones for durability and harmonious design. Bangladesh

O 46211 Tall Lidded Basket 14" h x 12½" dia \$42

P 46153 Nesting Baskets, Set of 3
Sm: 9" h x 9½" dia; Med: 10" h x 11½" dia;
Lg: 11" h x 13" dia \$52

VASANTI COTTON BEDDING

This 100% cotton bedding features a block-printed green, teal, and purple mandala design on a light beige background, accented with hand-stitched gold kantha embroidery. Teal block print on

Mandala

This global symbol for the universe is carved, cut & printed by hand in India.



reverse. Shams feature coconut button closures. Lightweight. Machine wash cold separate, tumble dry. *India*

Q 32757 Standard Pillow Shams, Set of 2
26"l x 20"w \$50

32804 **NEW** King Pillow Shams,
Set of 2 36"l x 20"w \$72 [View online.](#)

R 32756 Queen Quilt 96"l x 92"w \$168

32801 **NEW** King Quilt
108"l x 92"w \$210

MANDALA MANGO WOOD HOME COLLECTION

Sustainably sourced mango wood is etched by hand, then whitewashed to highlight hand-carved detail. *India*

S 33337 Photo Frame

Fits 5x7 photo. Attached claws for hanging and stand for shelf display. 9¾"l x 7¾"w \$34

T 33336 Phone Stand

Two pieces. Features cutouts for charging cable. 7¾"h x 3½"w x 5½"d \$25

U 32711 Wall Art, Set of 3

Each comes with attached wall hanger. Sm: 9¾"dia; Med: 11¾"dia; Lg: 13¾"dia \$88

V 33364 Coasters, Set of 4

Comes bundled together with jute rope. 4"dia \$32

MANDALA MANGO WOOD OFFICE COLLECTION

Get organized with these handmade desk accents! Crafted from sustainable mango wood, then handcarved with a traditional mandala design and whitewashed for rustic appeal. *India*

W 33421 Mandala Desktop Organizer

Features two drawers with cutout pulls and pen compartment. 4½"h x 8"l x 4"w \$28

X 33420 Mandala Tray Organizer

Includes single long compartment and three smaller compartments. 2"h x 10"l x 7"w \$22

MANDALA MANGO WOOD KITCHEN COLLECTION

Sustainably sourced mango wood is etched by hand, then whitewashed to highlight hand-carved detail. See more mango wood mandala items in our home collection. *India*

Y 32640 Wall Hooks, Set of 3

Keyhole hangers and coated iron hooks. 6"h x 4"w x 2"d \$36

Z 32643 Recipe Stand

Features a hinged, adjustable back stand that has 3 notches for various display angles. Fits both recipe books and tablets. Opening for a charging cord. 10½"h x 7½"w \$42

More than a basket

Women weavers
in Africa earn vital
income through
handcrafting

Natural raffia



Partnering with **SERRV** since 1996, artisans in
Uganda support the rights of women & girls.



RAFFIA BASKETS & TRAYS

Each basket, plate, and tray is made of hand-dyed raffia, and woven into beautiful patterns by rural women in Uganda who are building economic independence through handcrafts. Perfect for decorating, collecting mail, organizing supplies, or serving snacks! Due to handmade nature, colors may vary. *Uganda*

A 91160 Shamba Plate

1½" h x 13" dia \$38

B 91155 Makali Sunburst Basket

3" h x 12" dia \$36

C 91159 Makali Dash Plate

1½" h x 15½" dia \$38

D 91148 Turaco Feather Basket

2½" h x 12" dia \$36

E 91153 Turaco Feather Tray

19½" l x 17" w x 4" h \$46

F 91115 Black Starburst Basket

4" h x 15" dia \$38

G 91152 Black Swirl Tray

2½" h x 19" w x 13" d \$44

H 91116 Black Swirl Basket

4" h x 15" dia \$42

I 91134 Kukua Star Basket

2" h x 10½" dia \$32

J 91136 Kukua Plant Basket

6" h x 9" dia \$36

BOLGATANGA BASKETS

Ideal for storage, carriage, or colorful décor, each one-of-a-kind elephant grass basket helps women weavers earn a sustainable income through handcrafting. Size, shape, color, and patterns may vary due to handmade nature. In order to ship more efficiently, our artisan partners fold these baskets for packing. To remove creases, slightly dampen the basket, reshape, and air dry. See servv.org for additional instructions. Height includes leather-wrapped handle if pictured (unless otherwise specified). *Ghana*

K 25096 Round Aloe

Grass handle. 18" h x 14" dia \$76

Hand-dyed elephant grass



K



L



M

N

O



Q



R

S

L 25114 Coastal Savannah Market
17"h x 15" dia \$76
M 25083 Manzini Market
16"h x 12" dia \$76
N 25151 Limba Market
12"h x 14" dia \$76
O 25149 Savannah Sunset Market
17"h x 16" dia \$76
P 25150 Adaba Boat
20"h x 16" w x 11" d \$68

Q 25105 Harvest Boat
18"h x 12" w x 10" d \$68
R 25093 Grasslands Boat
20"h x 11" dia \$68
S 25081 Classic Grasslands
8"h x 11" dia \$52
T 25152 Adaba, Set of 2
Sm: 7"h x 13" dia; Lg: 8"h x 14" dia \$118
U 25146 Limba, Set of 2
Sm: 7"h x 13" dia; Lg: 8"h x 14" dia \$118



P



Partnering with SERRV since 2006, basket weavers in Ghana create vital income for their communities.



T



U



A



B

C

D

KALAMKARI MEADOW TABLE LINENS

Bring subtle, sophisticated charm to your table. These handmade kitchen textiles are crafted from block-printed kalamkari fabric, using all-natural vegetable dyes. 100% cotton. Machine wash cold separately, tumble dry. *India*

- A** 32776 Standard Tablecloth 90"l x 60"w \$72
B 32778 Placemats, Set of 2 19"l x 13"w \$24
C 32777 Napkins, Set of 2 20"sq \$18
D 32779 Runner 72"l x 14"w \$30

INDIGO DABU TABLE LINENS

These table linens are resist dyed with natural indigo after block printing creating a unique, coordinating pattern. Wash before first use in cold water with 1/2 cup of vinegar. Machine wash cold separately, tumble dry. *India*

- E** 34411 Standard Paisley Tablecloth 90"l x 60"w \$68
33476 NEW Large Paisley Tablecloth 120"l x 70"w \$96
F 32538 Round Paisley Tablecloth 70"dia \$72
G 33359 Standard Floral Tablecloth 90"l x 60"w \$72
33360 Large Floral Tablecloth 120"l x 70"w \$88
H 33361 Floral Napkins, Set of 2 20"sq \$18
I 32179 Placemats, Set of 4 19"l x 14"w \$42
J 32180 Napkins, Set of 4 20"sq \$32

K DAISY DABU KITCHEN APRON

This kitchen apron is hand made using a resist hand block-printing technique, printed on naturally dyed indigo cotton. Features rectangle patch pocket and 110"l adjustable strap. Wash before first use in cold water with 1/2 cup of vinegar. Machine wash cold separately, tumble dry. 30"h x 25"w *India* 32736 \$28

L ROUND NESTING BASKETS, SET OF 4

Natural kaisa grass is tightly handwoven with jute fibers to create a set of four nesting bowls, lending earthy warmth to tabletop or shelf. Sm: 3"h x 7"dia: Lg: 5"h x 11½"dia *Bangladesh* 46756 \$32

M SAMADRA SHORE BASKETS, SET OF 2

Soft-sided baskets featuring cream and powder blue jute fabric alongside natural woven jute. Sm: 9½"h x 10¼"w; Lg: 10¼"h x 12"w *Bangladesh* 46273 \$48

N DHAKA DENIM BASKETS

These baskets are handmade from recycled denim scraps, woven to form fun and sturdy storage for any room. Colors may vary. Med: 6¼"h x 8½"dia; Lg: 8"h x 9"dia *Bangladesh* 46305 \$38

FLORAL DABU BEDDING

Cotton fabric is dyed with natural indigo and block print with mud to resist the dye. Finished with kantha stitched embroidery. Coordinating pattern on reverse and coconut button closures. Due to the natural dye, we recommend washing before first use in cold water with 1/2 cup of vinegar. Machine wash cold separately, line dry. 100% cotton. *India*

- O** 32587 Standard Pillow Shams, Set of 2 20½"l x 26"w \$50
33450 King Pillow Shams, Set of 2 36"l x 20"w \$60
32761 Quilted Throw 60"l x 50"w \$85 View online.
P 32586 Queen Quilt 96"l x 92"w \$168
32758 King Quilt 108"l x 92"w \$188
Q 32805 Square Pillow Hidden zipper. Reversible. Insert included. 18"sq \$35

INDIGO DABU FASHION

Cotton accessories are dyed with natural indigo after block printing with mud to resist the dye. Scarves feature rolled and stitched edges. Wash before first use in cold water with 1/2 cup of vinegar. Machine wash cold separately, line dry. *India*

T TREE OF LIFE NAPKIN HOLDER

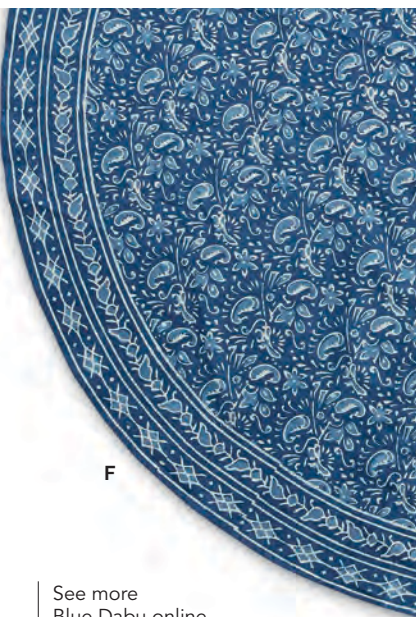
This beautiful shesham wood napkin holder is carved by hand in Saharanpur, a city in northern India that is a traditional center of wood carving. 6¼"h x 5"l x 2½"w *India* 33435 \$25

U MANGO WOOD TABLETOP CADDY

NEW Perfect for napkins, condiments, utensils and more, this smooth mango wood caddy features four compartments to store all your tabletop necessities. 9¾"h x 7"sq *India* 33436 \$32



E



F

See more
Blue Dabu online



L



M



N



K



IN THE SPOTLIGHT

Blue Dabu

All-natural cotton is block printed using traditional indigo dyes.



A

A GAME NIGHT GIFT BASKET

Perfect for family fun. Includes Find Four game and rainbow recycled cotton blend throw from India, Divine Milk Chocolate Caramel Sea Salt Crispy Thins from Ghana, and popcorn from Denver. Comes in a handmade paper box from Nepal. 96080 \$74



B

B RADIANT ECUADOR GIFT BASKET

Give color and beauty with this radiant gift set. Includes a cotton/acrylic scarf, two bars of aloe vera soap, and rainbow tagua necklace, all from Ecuador, packaged in a handmade paper box from Nepal. 96078 \$58



E GLOBAL SAMPLER GIFT BASKET

Includes dark ground organic coffee from South America, a ceramic mug from Vietnam, smoked habanero hot drops from South Africa, mango jam from eSwatini, a raffia basket from Uganda and a \$15 SERRV gift card. Comes in a handmade paper box from Nepal. 96077 \$86



C

C RELAX & REFRESH GIFT BASKET

Take a deep breath with this soothing gift box. Features aloe vera lemongrass soap from Ecuador, natural bath salts from South Africa, peppermint tea from Kenya, a handmade eye pillow from Nepal, and a lime lemongrass candle from Chicago, all packaged in a handmade paper box from Nepal. 96074 \$76



D

D CHOCOLATE LOVER'S GIFT BASKET

NEW Includes Divine hot chocolate, Milk Chocolate with Caramel Sea Salt Crispy Thins, and three 3 oz. chocolate bars from Ghana, all packaged in a handmade paper box from Nepal. 96085 \$68

Fair and Square

Handmade gift boxes create vital income for artisans & farmers



E



F

F BREAD DIPPER GIFT BASKET

This full-service gift basket includes one bottle each of our oak-smoked olive oil, garlic pepper and smoked hot rocks from South Africa, two colorful ceramic dipping bowls from the West Bank, and two block-printed cotton napkins from India, all in a handmade paper box from Nepal.

96067 \$66



G

G GLOBAL TABLE GIFT SET

NEW Set a global table with this fair trade gift set. Includes lemon pepper and oak-smoked olive oil from South Africa, a hand-carved trivet from India, four napkins from Bangladesh, and a \$15 SERRV gift card. Packaged in a handmade paper box from Nepal.

96087 \$72



H

H DIVINE TOP SELLERS GIFT BOX

Six assorted 3 oz. fair trade Divine Chocolate bars packaged in a handmade paper box from Nepal. Ghana

23220 \$26

More Divine Gift Boxes available online.



I

I BEAUTIFUL DAY GRANOLA GIFT BOX

The perfect way to start anyone's day, this gift set features all-natural handmade granola crafted by refugees living in the United States. Set includes one 12 oz. bag of Original Gourmet Granola and two 1.9 oz. granola bars in Pistachio Cardamom and Bananas Foster. 96084 \$16



J

J HOLY LAND OLIVE OIL DIPPING SET

NEW Straight from the Holy Land, this gift set features award-winning olive oil and za'atar seasoning from Israel, and a set of hand-painted dipping bowls and matching oil decanter from the West Bank. Comes in a handmade paper box from Nepal. 96093 \$78

Wow your crowd!

Keep rolls warm
all dinner long
with a terracotta
breadwarmer



TERRACOTTA BREADWARMERS

Whitewashed terracotta stone is incised with nature-inspired designs and sits within a handwoven kaisa grass basket with palm wrap detail. Warmer is oven safe and keeps bread warm.

Oval: 3½" h x 12½" w x 8½" d;

Round: 3½" h x 11" dia Bangladesh

A 46433 Spring Meadow \$30

B 46329 Lotus \$30

C 46120 Double Vine \$30

D 46197 Birds of a Feather \$30

E 46275 Mandala \$30

F 46799 Tree of Life \$30

G 46308 Spring Friends \$30

H 46293 Sunflower Harvest

Comes in wire-framed hogla basket.

16" l x 7" w x 3½" d **\$42**

46400 Peace Dove \$30 Shown in N.

I EMBROIDERED SUNFLOWER TEA TOWEL

This 100% cotton tea towel is exquisitely hand embroidered with bold sunflowers and bright green leaves. Hand wash. 26" l x 20" w **33367 \$16**

TERRACOTTA WARMING STONES

A smaller rendition of our bestselling breadwarmers! Warming stones are great for keeping dishes and mugs hot while protecting your table. Each comes in a small kaisa grass basket. Warmer is oven safe. Bangladesh

J 46342 Birds of a Feather Trivet 7¼" dia \$20

K 46330 Mandala Trivet 7¼" dia \$20

L 46331 Mandala Coaster 4¾" dia \$12

M BREAD LOVER'S GIFT BASKET

Includes a breadwarmer and basket from Bangladesh, two cotton napkins from India, lemon olive oil from Palestine, and a spice grinder from South Africa.

Basket: 3½" h x 12½" w x 8½" d **95851 \$76**

N BREAKING BREAD GIFT BASKET

Includes a breadwarmer and basket from Bangladesh, organic extra virgin olive oil and za'atar spice mix from Israel, and honey and rooibos-infused balsamic vinegar from South Africa. Basket: 3½" h x 11" dia **95765 \$62**

TREE OF LIFE SHESHAM KITCHEN

This beautiful shesham wood collection is carved by hand in Saharanpur, a city in northern India that is a traditional center of wood carving. India

O 34077 Trivet 7½" dia \$18

P 32638 Coasters, Set of 4

Comes in a display-worthy wooden holder. 4" dia **\$30**

Q 33435 Napkin Holder 6¼" h x 5" l x 2½" w \$25

DALI TREE COLLECTION

NEW Our classic Tree of Life, reimagined! Artisans in India hand carve each leafy tree design into sustainable mango wood to create these rustic kitchen pieces. India

R 33464 Trivet

Protective coating and foam feet on reverse.

6¾" sq **\$18**

S 33465 Coasters, Set of 4 4" sq \$28

T 33463 Hooks

Three metal hooks. 7¼" l x 9¾" w **\$26**



Partnering with **SERRV** since 1981, artisans in Bangladesh craft natural materials into income and opportunity.



Tree of Life





A taste for *travel*

Add global flavor
to your cup or plate



AFRICAN SAUCE BLENDS

Add delicious African flavor to your next meal!
Gluten free. See ingredients online at servv.org.
South Africa

- A 82039 Zulu Fire**
Spicy hot red chili sauce. 8 fl oz. \$8.75
- B 82040 Cape Malay Curry**
Mild, fruity curry. 8 fl oz. \$8.75

- C 82038 Harissa Red Pepper**
Richly spiced sauce with mild chili and mint. 8 fl oz. \$8.75

- 82045 Set of 3 Sauces**
Includes Harissa Red Pepper, Zulu Fire Sauce, and Cape Malay Curry. \$22

- D 82114 Safari Barbeque**
Fruity, sweet, and tangy. 8 fl oz. \$8.75

- E 82035 Smoked Habanero Hot Drops**
Spicy, smoked chili sauce with habanero. 4.2 fl oz. \$7.50

ESWATINI CHILI SAUCES

Chili sauces made from organic and locally-sourced ingredients fuse subtle heat with intense flavor. Gluten free. See ingredients online at servv.org. 6 fl oz. *eSwatini*

- F 84110 Pineapple** \$8.50
G 84096 Chipotle \$9
H 84095 Jalapeno \$8.50
I 84104 Peri-Peri \$8.50

J TASTE OF SOUTH AFRICA GIFT SET

A delightful boxed set! Includes Zulu Fire Sauce and mini spice grinders of Cape Garden Herbs and Madagascar Garlic Pepper. Zulu Fire Sauce: 8 fl oz.; Mini spice grinders: 1.2 oz. *South Africa* 82113 \$18

K TASTE OF ESWATINI GIFT SET

Give your taste buds a trip to eSwatini with this lovely gift set. Includes four chili sauce samples: Pineapple, Cayenne, Habanero, and Peri-Peri. 1.7 oz./bottle *eSwatini* 84111 \$18

ESWATINI PESTOS

Fresh organic herbs, spicy chilies, African macadamia nuts, and extra virgin olive oil stimulate the senses with rich flavors and intense aromas. Gluten free. See ingredients online at servv.org. 7.4 oz. *eSwatini* \$9.50

- L 84098 Basil Cayenne**
M 84097 Coriander Jalapeno

N TRADITIONAL ZA'ATAR MIX

This traditional spice mixture with sea salt can be used as a bread dip with olive oil, or on meats, vegetables, or hummus. 2.82 oz. *Israel* 43086 \$6

O MEDITERRANEAN MEDLEY GIFT SET

Share a taste of the Mediterranean. Includes 8.5 oz. organic olive oil and 2.82 oz. za'atar spice mix from Israel, both in a handmade jute gift bag from Bangladesh. Bag: 11½" h x 8½" w 95973 \$24

P SOUTH AFRICAN HERBS & SPICES

Filled with big flavor, these herbs and spices make a delicious complement to a variety of dishes. All bottles topped with built-in grinder to unlock the freshest flavor. Sold individually; view full collection and ingredients online. *South Africa*

- 82094 Khoisan Seaweed Salt Blend**
2.47 oz. \$6.75
- 82092 Braai Salt Blend** 2.47 oz. \$6.75
- 82093 Zulu Fire Spice** 1.76 oz. \$6.95
- 82027 Moroccan Harissa** 1.7 oz. \$6.95
- 82031 Smoked Hot Rocks** 2.5 oz. \$6.95
- 82095 Umzimmbubu Chili Ginger Pepper**
1.76 oz. \$6.95

- 82020 Cape Garden Herbs
1.4 oz. \$6.95
82019 Zanzibar Island Spice
2.1 oz. \$7.25
82026 Swahili Lemon Pepper
3.5 oz. \$7.45
82021 Garlic Pepper
2.3 oz. \$7.45
82111 Kariba Sunset Tomato Pepper
1.4 oz. \$7.45
82032 Victoria Falls Rainbow Pepper
1.8 oz. \$7.45

Q AFRICAN SPICES GIFT SET

Moroccan Harissa, Smoked Hot Rocks, Zanzibar Island Spice, and Cape Garden Herbs grinders from South Africa in a wire spice rack from India.

Rack: 8"l x 3"w x 4¼"h 95965 \$44

ORGANIC JUST COFFEE

Organic, small-batch, air-roasted fair trade coffee helps build social and economic justice, and long-term relationships with small-scale coffee growers. Ground. 12 oz.

R 95736 Hope & Justice Dark
Big, bold, and complex dark roast with notes of dark chocolate and grapefruit. Blend from Colombia and Peru. \$11.95

S 95737 Peace on Earth Dark
Full-bodied, smoky, and rich dark roast from Sumatra. \$11.95

T 95738 Sisterhood Solidarity Medium
Medium-bodied and subtly complex medium roast with earthy undertones. Grown by Las Diosas, a unique all-female cooperative in Nicaragua. \$11.95

95734 Peace on Earth Decaf Dark
Decaffeinated using the "Swiss Water Process," which allows water to be filtered and reused. View online. \$12.45

95739 African Highlands Light
Bright and lively light roast from Ethiopia. View online. \$11.95

95735 Early Riser Medium
Rich and full-bodied medium roast from Guatemala. View online. \$11.95

U SINGING ROOSTER MOUNTAIN BLEU ROAST COFFEE

100% Arabica shade-grown coffee from Haitian coffee farmers who use proceeds to invest in a sustainable future. Rich, nutty, and semi-sweet.

12 oz. Haiti \$11.95

31089 Ground

31136 Whole Bean

JUSTEA LOOSE LEAF TEA

Fair trade, loose leaf tea from small-scale farmers in Kenya is some of the world's most flavorful. 100% natural ingredients are grown pesticide free. Each tin makes 40 cups and comes with a hand-carved wooden teaspoon. Ingredients online at serrv.org. Kenya

V 11028 Purple Sampler
Purple Jasmine, Purple Rain, and Purple Chocolate. Low caffeine. 3.6 oz. total. \$16.95

W 11027 Herbal Sampler
Chamomile Dream, Little Berry Hibiscus, and Peppermint Detox. Caffeine free. 2.4 oz. total. \$16.95



X 11026 African Sampler
African Chai, Kenyan Earl Gray, and Mt. Kenya Black. Contains caffeine. 3.7 oz. total. \$16.95

Y 11001 Little Berry Hibiscus
Caffeine free. 3.2 oz. \$14.50

Z 11000 African Chai
Contains caffeine. 3.5 oz. \$14.50

AA 11002 Peppermint Detox
Caffeine free. 1.6 oz. \$14.50

BB 11003 Purple Rain
Low caffeine. 2.8 oz. \$14.50

CC 11012 Purple Chocolate
Low caffeine. 3.5 oz. \$14.50

DD 11021 Kenyan Earl Gray
Contains caffeine. 3.2 oz. \$14.50



FURRY FRIENDS CERAMIC MUGS

These sweet mugs feature a playful pooch and a frisky feline, handmade by artisans in Vietnam. Mugs hold approx. 9 oz. 3½"h x 3¼" dia Vietnam \$18

EE 92965 Little Whiskers

FF 92964 Husky Pup

Dragonflies!



A



B

C

D



E



F

DRAGONFLY CERAMICS

Dragonfly and botanical patterns painted in deep spruce beautifully complement lightly crackled creamy white and celadon glazes, and bring to mind the long, easy days of summer. Expertly crafted in the ancient Vietnamese village of Bat Trang, long celebrated for its tradition of creating fine stoneware. Dishwasher, microwave, and oven safe. *Vietnam*

A 92973 Petite Canisters, Set of 3

Each comes with a hand-carved wooden spoon. 5" h x 3 3/4" dia \$78

B 92974 Tea Infuser Mug

Holds approx. 10 oz. 5 3/4" h x 3 1/2" dia \$26

C 92720 Mug

Holds approx. 8 oz. 4" h x 3 1/4" dia \$14

D 92772 Tea for One

Teapot holds 16 oz., cup holds 8 oz.

5 1/2" h x 7 1/4" w x 4 1/4" d \$30

E 92975 Spoon Rests, Set of 2

Sm: 3/4" h x 4" dia; Lg: 3/4" h x 5" dia \$18

F 92815 Tall Mug

Holds approx. 14 oz. 4 3/4" h x 3 1/4" dia \$18

SANG HOA CERAMIC COLLECTION

These beautiful floral ceramics featuring bright hand-painted designs are crafted in Bat Trang village, famous for its centuries-old tradition of creating fine ceramics. Dishwasher/microwave safe. *Vietnam*

G 92959 Tea for One

Teapot holds approx. 12 oz.; Cup: approx. 6 oz.

6" h x 7 1/4" w x 4 1/4" d \$28

H 92960 Tea Infuser Mug

Holds approx. 10 oz. 5 1/4" h x 3 1/4" dia \$24

I 92962 Mug

Holds approx. 10 oz. 4" h x 3 1/4" dia \$16

GARDEN CHEF SETS

NEW These kitchen textile sets make perfect gifts! Apron, towel, and pot holder feature hand block printed floral designs with a splash of spring color. Aprons have single pocket and 110" l adjustable neck and waist tie. Towels and quilted pot holder each have hanging loops. One size fits most. 100% cotton. Machine wash cold, tumble dry.

Apron: 30" l x 25" w; Towel: 26" l x 20" w;

Pot Holder: 9" dia *India* \$52

J 33467 Cornflower

K 33468 Poppy

L KALLADA NAPKINS, SET OF 4

These 100% cotton napkins are made by artisans in India with traditional block printing. Set features a flowing design inspired by Indian motifs in heather purple, cantaloupe, sea green, and grapefruit.

Machine wash cold, line dry. 20" sq *India*

32500 \$32

M SAVANNAH SELFIES TRIVETS, SET OF 3

These beautiful soapstone trivets feature hand carved and dyed images of our favorite savannah animals, all posing for the camera. Features giraffe, zebra, and cheetah. 7" dia *Kenya* 45760 \$48

N TEKE MASK COASTERS, SET OF 4

Artisans in Kenya dye and etch incredible detail into each of these natural soapstone coasters, modeled after ceremonial teke masks. 4" dia *Kenya* 45759 \$40

WEST BANK CERAMICS

Our West Bank ceramic collection features floral motifs reflective of traditional Palestinian craft. High gloss glaze. Slight color and paint variations due to handmade technique. Microwave safe. Hand wash recommended. *West Bank*

O 43215 Jasmine Oil Decanter

Plug closure made with wood and rubber. Holds approx. 8 oz. 6 1/2" h x 3" dia \$36

P 43206 Jasmine Dipping Bowls, Set of 2

1 1/2" h x 3 1/2" dia \$20

Q 43211 Yellow Jasmine Mug

Holds 12 oz. 4" h x 3 1/4" dia \$20

R 43212 Blue Jasmine Mug

Holds 12 oz. 4" h x 3 1/4" dia \$20

S 43210 Teal Jasmine Mug

Holds 12 oz. 4" h x 3 1/4" dia \$20

T 43213 Rose Jasmine Mug

Holds 12 oz. 4" h x 3 1/4" dia \$20

96053 Set of 4 Jasmine Mugs \$72

U 43186 Appetizer Plates, Set of 4

1" h x 5 1/4" dia \$34

V 43135 Dipping Bowls, Set of 4

1 1/2" h x 3 1/2" dia \$34

W 43174 Medium Yellow Bowl

2" h x 7" dia \$30

X 43131 Large Yellow Bowl

2" h x 11" dia \$56



O



P

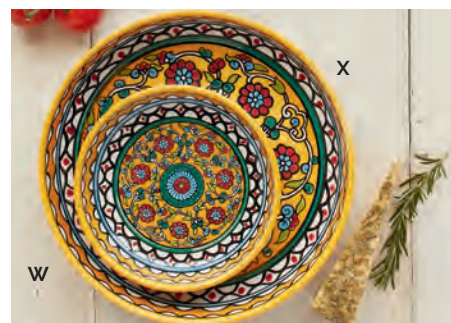


It's a colorful world

From hand carving trivets in Kenya to hand painting ceramics in the West Bank, global artisans share their culture & artistry.



Partnering with SERRV for many years, artisans in the West Bank use ceramic painting as a source of income.



Cook with the *best* Top-notch tastes & tools from around the world



A



B



C

Hand-spun bamboo



D



H

I



N

O



P

Q

R



E

LIM DOM KITCHEN COLLECTION

This collection features smooth bamboo paired with white eggshell lacquer, handmade by artisans in Vietnam. Food safe finish. Hand wash only. Vietnam

A 92963 Salad Set

Includes serving bowl, 4 small bowls, and 2 salad serving utensils.

Large Bowl: 3 1/4" h x 10 1/2" dia;

Small Bowls: 2 1/4" h x 6" dia; Utensils: 11" l

\$96

B 92997 NEW Canisters, Set of 2

Sm: 6 1/4" h x 4 1/2" dia; Lg: 6 3/4" h x 5 1/2" dia

\$48

C 92996 NEW Oblong Bowl

13 3/4" l x 6" w x 2" h

\$36

D 92995 NEW Salt Keeper 2 1/4" h x 3" dia

\$18



F



G

E BAMBOO COOKING UTENSILS, SET OF 3

This set of kitchen utensils is made of hardy, sustainable bamboo by artisans, who carve and smooth each piece. Features an edge spatula, a mixing spoon, and a slotted spoon. Opening in each handle for hanging. 12 1/2" l x 2 3/4" w Vietnam

92941 \$28



S

POPCORN MIXES

Make movie night stand out with this delicious popcorn from Women's Bean Project in Denver. Makes 20 cups popped. 10.6 oz. USA

F 96009 Blue Popcorn with Salted Caramel

G 96008 Rainbow Popcorn with Salt & Pepper

Recycled denim

BAKING MIXES

Add a few ingredients of these delightful mixes from Women's Bean Project in Denver, and you'll have the perfect side or dessert in no time! *USA*

H 95804 Golden Cornbread

Makes approx. 16 servings. 13 oz. \$6.75

I 95803 Cream Scone

Makes approx. 10–12 scones. 25 oz. \$7.75

95990 Chocolate Chip Oatmeal Cookie

Makes approx. 20 cookies. 20.8 oz. \$7.75

View online.

95704 Snickerdoodle Cookie

Makes approx. 2 dozen cookies. 25 oz.

\$7.75 View online.

J OAK-SMOKED OLIVE OIL

Fine extra virgin olive oil is cold-smoked with oak wood from repurposed wine barrels, infusing it with exceptional smoky flavor. 8.5 fl oz. *South Africa* 82041 \$8.50

BALSAMIC VINEGAR REDUCTIONS

Balsamic vinegar and special ingredients are reduced to create culinary delights. Visit servv.org for usage suggestions. 8.5 fl oz. *South Africa*

K 82037 Pomegranate

Infused with a light, fruity flavor. \$9.75

L 82029 Rooibos & Honey

Savory with sweet honey and an undertone of rooibos. \$9.75

M 82030 Sundried Fig

Rich, dark, and sweet with fig overtones. \$9.75

82046 Set of 3

One of each flavor. \$28

SINDYANNA ORGANIC OLIVE OIL

Winner of the Extra Gold medal at the Premio Biol competition in Italy, this cold-pressed extra virgin olive oil comes from ancient Galilean groves farmed by marginalized Arab olive growers, then made into oil by Israeli and Palestinian women creating a model of peaceful coexistence. Kosher certified. Available by the case online. *Israel*

N 43106 Regular 8.5 fl oz. \$9

O 43094 Large 25 fl oz. \$22

INFUSED ORGANIC OLIVE OILS

This incredible organic olive oil is prepared with original sharp Surri olives from Palestine, then infused for subtle and remarkable flavor. Perfect as-is for salads and breads! 8.4 fl oz. *West Bank* \$21

P 95837 Basil

Q 95861 Garlic

R 95836 Lemon

S BLACK MAMBA FRUIT BAT JAMS

Flavorful jams include fresh fruit, sugar, and lemon juice. Gluten free. 8.8 oz. *eSwatini* \$8

84106 Orange Marmalade

84108 Pineapple Mango

84109 Peach & Ginger

84107 Mango

MAYA DENIM COLLECTION

These darling recycled denim kitchen accessories feature hand-stitched kantha patterns and are great for hiding stains! *Bangladesh*

T 46332 Apron

Adjustable 110"l tie and front pocket. One size fits most. Cotton. 30"h x 24"w \$36

U 46333 Pot Holder

Hanging loop. 8"sq \$16

Sustainable mango wood



MANDALA KITCHEN COLLECTION

Sustainably sourced mango wood is etched by hand, then whitewashed to highlight hand-carved detail. See more mango wood mandala items in our home collection. *India*

V 32640 Wall Hooks, Set of 3

Keyhole hangers and coated iron hooks.

6"h x 2"w x 4"d \$36

W 32643 Recipe Stand

Features a hinged, adjustable back stand that has 3 notches for various display angles. Fits both recipe books and tablets. Opening for a charging cord. 10½"h x 7½"w \$42

X 33364 Coasters, Set of 4

Comes bundled together with jute rope.

4"dia \$32

Y 32742 Rolling Pin

Smooth center roller. 18"l x 2"dia \$30

AMARA MARBLE KITCHEN TOOLS

These kitchen tools are crafted with gorgeous white marble carved and polished to perfection, bringing handmade quality to your kitchen. *India*

Z 33424 Rolling Pin & Stand

Mango wood handles and stand.

3¼"h x 18"l x 2½"w \$38

AA 33425 Mortar & Pestle

Mortar: 3¼"h x 5"dia; Pestle: 4¼"h x 1¼"dia \$34

33423 Pizza Cutter

Metal pizza wheel. 7½"l x 2¾"w \$28

View online.

Hand-carved marble



Sustainable wood

Indonesia and the Philippines bring exotic acacia, suar & teak to the table.



MATRA KITCHEN COLLECTION

These hand-carved kitchen pieces are made from suar wood, accented with a coconut shell inlay. Boards feature carved hole in handle for hanging. *Indonesia*

A 37827 Salad Set

Set includes bowl and Salad Servers.
Bowl: 3½" h x 10" dia \$84

B 37829 Salad Servers, Set of 2

7¼" l x 3¼" w \$24

C 37826 Bread Board 17¾" l x 5" w x ¾" h \$42

D 37828 Serving Board

13½" l x 9" w x ¾" h \$40

KAYU KITCHEN COLLECTION

NEW Sustainable suar wood is carved, sanded, and stained into these beautiful and natural kitchen presentation pieces. *Indonesia*

E 37850 Cake Stand 4½" h x 11¾" dia \$52

F 37851 Pizza Board 17" l x 12¾" dia \$54

G 37849 Salt & Pepper Shakers

Plastic stoppers in base. 3¼" h x 1½" dia \$18

H SPURTLE UTENSIL SET

Handmade teak wood spurtle set is cut, sanded, and polished to perfection. Set features two long spatulas and a long scraper. Largest: 12" l x 2½" w *Indonesia* 37830 \$28



ACACIA WOOD KITCHEN COLLECTION

The perfect sustainable additions to your kitchen. Cut, sanded, and lightly stained. *Philippines*

I 74460 Salad Set

Includes large serving bowl, six salad bowls, and 12" l servers. Sm: 2" h x 6" sq; Lg: 4" h x 12" sq \$132

J 74515 Mahalaga Cutting Boards, Set of 2

Sm: 11¼" l x 8" w; Lg: 16" l x 12" w \$48

K 74474 Oblong Plates, Set of 2

7" l x 5" w \$18

L 74473 Small Bowls, Set of 2

1½" h x 4" dia \$14

M 74497 Quezon Mortar and Pestle

Mortar: 4" h x 4" dia; Pestle: 5½" h \$30

N 74292 Oval Tray 16¼" w x 6¾" dia \$52



Partnering with SERRV since 1995, artisans in Pakistan hand carve local onyx in small workshops.

ONYX KITCHEN ACCESSORIES

Artisans in Pakistan select the highest quality pieces of white onyx to carve into high-quality kitchen necessities, each with its own natural patterns and variations. Timeless pieces are perfect for home use, or as housewarming or wedding gifts! Pakistan

O 70172 **NEW** Rough-Edge Cake Stand
Shesham wood stand. 4¾" h x 10" dia \$76

P 70149 Wine Chiller
7" h x 4½" dia \$72

Q 70156 Mortar & Pestle
Mortar: 3¾" h x 4" dia; Pestle: 4" l \$44

R 70171 Bowl
3" h x 8" dia \$65

S 70155 Rough-Edge Trivet
7¼" dia \$24

T 70170 Rough-Edge Cheese Board
13" l x 6" w \$48

U 70169 **NEW** Salt & Pepper Shakers
Plastic screw cap in base.
3" h x 1½" dia \$30



Shop our complete collection of fair trade products at serrv.org 27



A



E



I



B



G



J



D

SUNNY SANGANER TABLE LINENS

The sunny yellow and bold blue in this simple but sophisticated block-printed pattern brings warmth to any table. 100% cotton. *India*

E 33132 Standard Tablecloth
90"l x 60"w \$72

32402 Large Tablecloth
120"l x 70"w \$88

F 32401 Placemats, Set of 2
19"l x 14"w \$24

G 33131 Napkins, Set of 2
20"sq \$18

H 32631 Runner
72"l x 14"w \$30

MONSOON FLOWER TABLE LINENS

These screen-printed linens bring the vibrancy of spring to your table in bold blues and greens. 100% cotton. *India*

I 32396 Standard Tablecloth
90"l x 60"w \$72

32404 Large Tablecloth
120"l x 70"w \$88

J 32397 Napkins, Set of 2
20"sq \$18

K 32733 Runner
72"l x 14"w \$30

KADI COLLECTION

Exotic jackfruit hardwood is harvested, carved, sanded, and finished by hand into elegant pieces for any kitchen. Hole in handle for easy hanging. *Vietnam*

L 92978 Serving Board
15½"l x 7¼"w x ¾"h \$42

M 92977 Bread Board
17¾"l x 4¾"w x ¾"h \$44

LAK LAKE CERAMIC COLLECTION

Glazed in colors that reflect the shores and depths of the lakes of Vietnam, this ceramic collection is crafted in Bat Trang village, famous for creating fine ceramics.

Dishwasher, microwave, and oven safe. Coloration varies. *Vietnam*

N 92942 Canisters, Set of 3
Sm: 4¼"h; Med: 5"h; Lg: 5¾"h \$98

O 92949 Utensil Holder
6"h x 4¾"dia \$34

P 92958 Pitcher
Holds approx. 32 oz.
9"h x 4½"dia \$45

Q 92943 Standard Mug
Holds approx. 10 oz.
4"h x 3¼"dia \$14

R 92944 Tea Infuser Mug
Holds approx. 10 oz.
5"h x 3¼"dia \$24

S 92945 Tea Infuser Teapot
Holds approx. 34 oz.
5¾"h x 5½"w x 9¼"l \$48

T 92957 Serving Bowls, Set of 2
Sm: 2¾"h x 7"dia;
Lg: 3¼"h x 9"dia \$88

U 92970 Baking Dish
Includes dish and lid.
4¾"h x 8"dia \$68

Centuries-old block print from India

MODERN JAIPUR TABLE LINENS

A beautiful floral design graces these textiles, which are screen printed entirely by hand. Handmade in India where artisans have been practicing the craft for centuries. 100% cotton. *India*

A 34908 Standard Tablecloth
90"l x 60"w \$72

32403 Large Tablecloth
120"l x 70"w \$88

B 33306 Napkins, Set of 2
20"sq \$18

C 32618 Runner
72"l x 14"w \$30

D 33462 **NEW** Round
Tablecloth 70"dia \$72



L

M



P



N

O



Q

R

S

Handmade
pottery from
Vietnam



Partnering with SERRV since 1999, artisans in northern Vietnam beautifully preserve traditional pottery making.



T



U



V



W

V 92972 Sponge Holder

2 3/4" h x 3" dia \$12

W 92971 Tall Mug

Holds approx. 16 oz.

4 3/4" h x 3 1/4" dia \$18

X 92979 Round Spoon Rest

3/4" h x 5" dia \$12

Y 92969 Oval Platter

1 1/2" h x 11" l x 8" w \$38

Z 92983 **NEW** Salt & Pepper Shakers

Silicone stoppers in base.

3 1/4" h x 1 1/4" dia \$24



X



Y



Z

Shop our complete collection of fair trade products at serrv.org 29

Sweet deal!

Fair trade chocolate means vital income for cocoa farmers



Partnering with SERRV since 2000, small-scale farmers in Ghana earn fair premiums for their cocoa beans.



A



D



E

F



G



H



I

J



Contains two individually wrapped bars of chocolate.

A DIVINE LARGE BAR CASES

A box of classic and giftable chocolate bars. See serv.org for ingredients. Kosher certified. 3 oz./bar, 12 bars/case Ghana **\$39.95**

- 23203 Milk with Toffee & Sea Salt
- 23211 60% Dark with Toffee & Sea Salt
- 23212 White with Strawberries
- 23213 Milk Chocolate
- 23215 70% Dark Chocolate
- 23210 60% Dark with Pink Himalayan Salt
- 23205 70% Dark with Mint Crisp
- 23206 70% Dark with Raspberries
- 23207 41% Dark Hazelnut Truffle
- 23209 68% Dark with Almonds



B



C

DIVINE CHOCOLATE CRISPY THINS

These chocolate crisps are the perfect sweet snack, featuring rich Divine chocolate with delicious add-ins. Kosher certified. Approx. 22 crisps per package. 2.8 oz. Ghana **\$7.95**

- B 23223 Milk Chocolate With Caramel & Sea Salt
- C 23224 Dark Chocolate With Mint

D 6 LITTLE BARS

Too cute! A package of 6 miniature Divine Bars in assorted flavors. 0.5 oz./bar Ghana **\$5.95**

DIVINE MINIS

Great for sampling and sharing! Each bar 0.15 oz. 100 bars/bag; 15 oz. total weight. Ghana **\$29.95**

- E 23177 Dark

Vegan.

- F 23176 Milk

DIVINE SMALL BAR CASES

The perfect size to share with friends and family, or to stash away for chocolate cravings! Kosher certified. 1.2 oz./bar, 18 bars/case. Ghana **\$26.95**

- G 23185 70% Dark Chocolate

- H 23186 Milk Chocolate

ZOTTER VEGAN CHOCOLATE

Each bar in our vegan-friendly chocolate collection is made with organic ingredients and supports small-scale cocoa farmers. Contains two individually wrapped bars. 2.47 oz. USA **\$7.50**

- I 96038 Uganda 70% Dark Chocolate

- J 96037 Brazil 72% Dark Chocolate

K SARI EYE MASK

Made from recycled sari fabric and padded to block the light. Colors and patterns will vary. 3"h x 8½"l India 32659 \$10

L SHANTI SHIBORI ROBE

NEW This beautiful lightweight robe features indigo-dyed cotton shibori with hand-stitched kantha embroidery accents. 89"l tie. 100% cotton. Machine wash cold, line dry. One size fits most. 37"l India 33473 \$72

M MANGO WOOD FOOT ROLLER

Three rows of hand-carved roller balls are housed in a box with etched and burned mandala design. 6½"l x 4½"w x 1¾"h India 33394 \$26

N FRESH START GIFT BASKET

Made by women who escaped human trafficking. Includes two 3.5 oz. bars of coconut/palm oil soap in lavender coconut and cinnamon clean, jasmine candle, and a natural jute mitt. Basket wrapped with recycled sari fabric; colors vary. 3½"h x 8½"w Bangladesh 46053 \$38

FELT ANIMAL PLANTERS

Handcrafted from felt with embroidered accents, these adorable planters are perfect for succulents and other small indoor plants. Includes 2¾" dia ceramic insert, no drainage hole. Nepal \$36

O 65832 Trunk Show Elephant 8"l x 6"h x 3" dia

P 65833 Tardy Tortoise 4½"l x 7"h x 4" dia

Q 65834 Llama-Rama 8½"l x 3½"h x 6" dia

ABHRAMA WELLNESS COLLECTION

Soft 100% cotton features a lovely blue sky pattern. Each features removable exterior case with interior rice pillow. Microwave for heat, or place in freezer to use cold. Nepal

R 65825 Neck Pillow 23"l x 5"w \$26

S 65824 Eye Pillow 8"l x 4"w \$14

KANTHA TRAVEL ACCESSORIES

Handmade from recycled saris. Vinyl lining on interior. Zip-top closure. Sari colors will vary. Cotton. India

T 32272 Toiletries Bag

6½"h x 10½"w x 3½"d \$24

U 32271 Makeup Bag

5"h x 8"w x 2½"d \$18

SACRED MARK SOAPS

100% natural handmade soaps provide employment to women who escaped sex trafficking. Soaps come in 5" recycled sari bag; prints vary. See ingredients at serrv.org. 3.5 oz. ea. Bangladesh \$16

V 46178 Spicy

Chai masala and clove orange scents.

W 46177 Sweet

Lemongrass & honey and lavender coconut scents.

NATURAL BATH SALTS

Made with genuine sea salt from the South African coast. See ingredients at serrv.org. 14 oz. South Africa \$16

X 82110 Romance

A romantic blend of fresh rose, sweet geranium, and native bougainvillea flowers.

Y 82109 Relaxation

A soothing blend of fresh eucalyptus, tea tree, and lavender.

Simple pleasures

All-natural luxuries for your downtime





A



B

C



D

A JALA SARONG

NEW An easy addition to your beach attire, this lightweight sarong in shades of blue features a hand block printed geometric design. 100% cotton voile. Hand wash. 66"l x 44"w India 33481 \$36

COSTA COLLECTION

NEW Like the beaches of Mexico, these beautiful accessories sparkle with natural abalone shell in an alpaca silver setting. Mexico

B 61290 Necklace
Lobster clasp. 19"l;
Pendant: 2¼"l x 1¼"w \$36

C 61292 Earrings
Silver-plated hooks. 2"l \$32

D PAHI PENDANT NECKLACE

NEW Radiant abalone teardrop with a resin back hangs from a triple-strand glass bead cord, bringing a little bit of the Indonesian coast to any outfit. Button closure. Necklace: 24"l; Pendant: 2½"l Indonesia 37855 \$28

SAFFA SHELL COLLECTION

Radiant abalone shell and hand-dyed indigo shibori silk covered beads come together in this eye-catching collection. Vietnam

E 92981 Earrings
Silver-plated hooks. 2¾"l \$22

F 92980 Necklace
Tie closure. 58"l including ties. \$32

G LAU RECYCLED GLASS NECKLACE

The tropical blues and greens of this recycled sea glass necklace bring a slice of paradise to any outfit and employment to a group of artisan women in Bali. Can be double wrapped as shown. Black cotton cord. 46"l Indonesia 37837 \$24

H COASTAL STRIPE SCARF

Cool, gauzy scarf is hand dyed in soft beach tones and handwoven with light textured stripes. Twisted fringe ends. 100% cotton. 71"l x 14"w India 32454 \$28

I KOHARA PLAIDWEAVE SCARF

Cotton threads are woven together to create this lightweight plaid scarf. Open weave for airy texture. Twisted and knotted fringe ends. 100% cotton. 71"l x 21"w India 32716 \$30

JODEE CANVAS COLLECTION

These navy and cinnamon accessories are stylish enough to carry with any outfit, and sturdy enough to withstand day-to-day use. Each features antique brass hardware and white and olive fabric lining. Crossbody strap is removable and adjustable up to 55"l. 100% cotton canvas, vegan. India

J 32785 Tote
Interior and exterior zipper pockets, three interior slip pockets. 29"l shoulder straps. 12¾"h x 18"w x 5"d \$58

K 32786 Crossbody Bag
One interior zipper pocket and two interior slip pockets. Exterior zipper pocket on front with magnetic closure slip pocket on back. 9½"h x 10"w x 1½"d \$44



E



G



H



I



J



K

See care instructions online at serrv.org.

L BLACK HERRINGBONE TOTE

Classic herringbone pattern is hand loomed from juttan, a mix of natural jute and cotton, to create the pliable body of this dapper bag. Paired with natural suede leather bottom and 17" handles. Lined interior has three open side pockets. Magnetic snap closure. 16½"h x 16"w x 5½"d
Bangladesh 46105 \$65



L

BEACH SCARVES

These soft and lightweight beachy scarves are striped with block-printed sunbursts and finished with slightly fringed ends. Perfect for a sunny day. 100% viscose. 71"l x 27½"w India \$36

M 32611 Sea

N 32610 Sand



N

M

N

O AYATA PATINA STATEMENT NECKLACE

NEW Multicolored brass patina squares are strung together by artisans in India to craft this unique and rustic necklace. Brass chain. Adjustable up to 32"l.
India 33482 \$34



O



P

Q



S

T



U

V



R

R JAYA BLOCK TOTE

NEW Natural jute is hand woven by artisans in India to create this fashionable and sturdy tote. Tan cotton blend lining. Interior features single small zipper pocket and divided open pocket. Magnetic snap closure. 25"l handles. 15½"h x 16"w x 5"d India 33485 \$46

FARA TURKANA COLLECTION

NEW Turkana glass, bone, and hand-shaped and dyed clay beads come together to create these unique accessories with ethnic appeal. Kenya

P 45766 Necklace

Hook and eye closure. 27½"l \$48

Q 45768 Earrings

Brass hooks. 2½"l \$24

TOYA SILK COLLECTION

NEW Silk is tied and dyed in traditional shibori style, then wrapped around individual beads to form these truly one-of-a-kind accessories. Vietnam

S 92998 Necklace

Two strands. 34"l \$30

T 92999 Earrings

Silver-plated hooks. 2½"l \$20

TASARI COLLECTION

NEW Beachy pastel glass beads are strung together in unique patterns with brass accents to create these gorgeous pieces. Perfect for daily wear or a night out! India

U 33479 2-Strand Necklace

Wear long or doubled. Lobster clasp. 51"l \$24

V 33480 Multi-Strand Bracelet

Lobster clasp. 8"circ \$16



WATERCOLOR SCARVES

Artisans dilute paint with saltwater to give a dreamy watercolor quality to the patterns of these hand-painted scarves. Hems hand rolled and stitched. 100% silk. *India*

- D** 34708 Blue Gogo 71"l x 12"w \$28
E 34915 Pink Gogo 71"l x 12"w \$28
F 32694 Kalyani 70"l x 20"w \$34

STRIPE SCARVES

Lovely handwoven scarves have just a hint of shimmer. Fringed ends are twisted and knotted. 50% cotton/50% silk. 68"l x 29"w *Vietnam*

- G** 92729 Teal \$22
H 92495 Brown \$22

I PEACOCK MANDALA SCARF

Intricate aqua mandalas spread across a peacock blue background in this 100% silk scarf. 70"l x 12"w *India* 32693 \$26

DONATE TODAY.

Trading fair for over 70 years!
 Your tax-deductible donation*
 makes a direct impact on fair trade
 artisans, farmers, and their families.
 Visit serrv.org/donate

Fit to be tied

Wrapped, draped, or knotted, these featherweight scarves are a beautiful way to support artisans in India and Vietnam.

HAND-PAINTED SCARVES

These elegant lightweight scarves are woven on small looms and exquisitely hand painted to create a lightweight, globally inspired accessory. 55% cotton/45% silk. 71"l x 14"w *India* \$42

- A** 32452 Lapis Floral
B 35523 Plum Floral

C OCEAN WAVE SCARF

Soft scarf is screen printed and hand painted in brilliant colors and rolling patterns at either end. 100% silk. 71"l x 12"w *India* 34041 \$28

Water colors

Deep oceans and shallow lagoons inspire handmade jewelry from India to Peru.



Partnering with **SERRV** since 1991, artisans in Lima are able to provide warm meals & education to children by crafting local gems into jewelry.

NATURAL PERUVIAN EARRINGS

These earrings pack a powerful pop of color. Natural tones vary. Sterling silver settings, hooks, and posts unless otherwise noted. *Peru*

J 73067 Long Labradorite 2"l \$48

K 73080 Peruvian Turquoise Column Chrysocolla. Flat silver back. 1½"l \$38

L 73108 Chrysocolla Long Drops Chrysocolla in brass setting. Brass hooks. 2"l \$52

M 73101 Azurite 1¼"l \$45

N 73047 Peruvian Turquoise Posts Chrysocolla. ¾"dia \$32

O 73100 Lapis Circle 1¼"l \$40

MONARCH COLLECTION

Handmade paper in brilliant blues is covered with clear protective resin backed with alpaca silver. Designed in collaboration with guest designer Maria Amalia Wood. *Mexico*

P 61282 Mariposa Necklace 28"l; Pendant 3"l \$40

Q 61279 Azula Earrings Sterling silver hooks. 2"l \$32

MAKADI GLASS COLLECTION

Handmade glass beads of various shapes, sizes and colors are strung together in this unique collection. *India*

R 32784 Necklace Strung on green cotton string. 35"l; Tassel: 8"l \$30

S 32832 Earrings Asymmetrical. Brass hooks. 3"l \$22

T VERDE EARRINGS

Faceted apatite earrings radiate with vibrant verdant color and shiny sterling silver. Each elegant hand-carved piece is paired with a small rose quartz stone. Sterling silver hooks. 1¼"l *India* 32201 \$48



See care instructions online at serrv.org.

Next to nature

Earth-inspired jewelry & accessories



CARACOL COLLECTION

Beautiful abalone shell pieces shine with alpaca silver backing. Designed in collaboration with guest designer Maria Amalia Wood. Mexico

A 61285 Earrings
Sterling silver hooks. 2"l \$34

B 61287 Necklace
Lobster clasp. Adjustable from 18"-20"l;
Pendant: 1 3/4"l \$36



C RUVIA BLACK ONYX NECKLACE

Rich black onyx is carved and polished into a teardrop with sterling silver backing. Hangs on sterling silver chain with lobster clasp.

Necklace: 19 1/2"l;
Pendant: 3/4"l Peru
73114 \$54



ADRA LAYERED SILVER COLLECTION

These handmade accessories feature 925 grade sterling silver squares, which are layered, brushed, and hammered for unique texture and appearance. Peru

D 73112 Earrings
Sterling silver posts. 5/8"l \$48

E 73113 Necklace
Silver wire necklace with lobster clasp.
Necklace: Adjustable from 19 1/2"-21 1/2"l;
Pendant: 1 1/4"h \$68



CLARA CRYSTAL COLLECTION

Sparkling crystal in sterling silver setting makes this collection both elegant and classy, perfect for a night out. Peru

F 73116 Earrings
Sterling silver hooks. 1 1/8"l \$54

G 73115 Necklace
Sterling silver chain with lobster clasp.
Necklace: 19 1/2"l; Pendant: 3/4"l \$46



SAPHA PEARL JEWELRY

Brilliant freshwater pearl rests in a silver-plated brass setting for heirloom-quality accessories. Silver plated accents. India

H 32834 Earrings 1/4" dia \$28

I 32835 Pendant Necklace
Necklace: 16"l; Pendant: 5/8"l \$48

Support fair trade artisans by ordering today at serrv.org or call **888.294.9660**

SERRV

532 Baltimore Blvd, Suite 409
Westminster, MD 21157-6120

If ordering by mail, make checks payable to SERRV and include your local sales tax unless your state is listed to the right. Please include the Source Code and Customer Number found on the back of your catalog.

Nonfood items can be returned within 30 days of receipt. Please contact us at orders@serrv.org before sending your return. **No returns on food.**

Sales Tax

Don't include sales tax if you live in one of these states/territories:

Alaska	North Dakota
Delaware	Oregon
Idaho	South Dakota
Mississippi	Wyoming
Montana	Guam, Virgin Islands, Puerto Rico, APO/DP
New Hampshire	
New Mexico	

SHIPPING CHART*

Order Value	Ground
\$0 - \$24.99	\$7.95
\$25 - \$49.99	\$8.95
\$50 - \$99.99	\$9.95
\$100 - \$149.99	\$11.95
\$150 - \$249.99	\$14.95
\$250 - \$349.99	\$19.95
\$350 - \$499.99	\$25.95
OVER \$500	CALL FOR RATES

* Personal Orders

Add \$25 for orders shipping to Canada.

All sales and special offers expire on 7/31/2022.

Please visit serrv.org/customer-care for a printable order form, second day shipping rates, and more. Upgraded shipping is not available for oversized items.



Partnering with SERRV since 1991, artisans in Java craft one-of-a-kind silk scarves using locally sourced natural dyes.

PRESSED LEAF SILK FASHION

Leaves from the teak tree, hibiscus flower, and more are pressed on silk, then naturally hand dyed with jolawe seeds and the leaves of eucalyptus and angkana trees. Each is unique; colors and patterns will vary. Silk/viscose blend. Dry clean only. Indonesia

- J 37814 Parchment Scarf 78"l x 21"w \$80
- K 37815 Storm Scarf 78"l x 21"w \$80
- M 37852 **NEW** Mauve Scarf 78"l x 21"w \$80
- N 37843 Blush Bandana 20"sq \$44

L GOLD DUST WILDFLOWER SILK SCARF

This beautiful 100% silk scarf is screen printed with a delicate floral design. Features knotted fringe ends. Dry clean only. 73"l x 31"w Vietnam 92948 \$46

MAJANI WEAVE COLLECTION

This elegant and artistic collection is hand made using natural sisal grass dyed in autumn tones, which is intricately hand sewn by master weavers. Paired with sterling silver rings. eSwatini

- O 84133 Earrings Sterling silver hooks. 1"l \$38
- P 84132 Necklace Double layer braided cotton cord adjustable up to 20"l. Pendant: 1"l \$72

Q SOLTAR DROP EARRINGS

NEW Hand hammered free-hanging copper and shiny brass are polished to perfection, making these goes-with-anything earrings your new staple accessory! Brass hooks. 2"l Peru 73120 \$38

RUSTIC LEATHER BAGS

Rich, dark brown leather is paired with antique brass hardware in these classic, smooth leather bags, handmade in Kolkata. India

- R 32646 Crossbody Bag Recessed zip top closure. Exterior and interior both feature one zip and two open pockets. Removable leather tassel. Dark chocolate twill lining. 58"l adjustable strap. 9½"h x 12½"w x 2¾"d \$110
- S 33172 Tote Bag Cotton paisley print lining, with one zip pocket and one small open pocket. Single magnetic snap closure. Removable leather tassel. 22"l reinforced rolled leather handles. 12"h x 14½"w x 4"d \$168

Shop our complete collection of fair trade products at serrv.org 37

Beauty from around the world

NATURAL TAGUA FROM ECUADOR



A



B



C

D



E



F

G



J



K



H



I

A PLUM FLORAL SCARF

This elegant scarf is woven on a small loom and exquisitely hand painted in bold colors to create a lightweight globally inspired accessory. 55% cotton/45% silk. 71"l x 14"w India 35523 \$42

LIDA TAGUA COLLECTION

NEW Crafted from sustainable and natural tagua nuts cut and dyed by hand, this subtle pastel collection reveals unique one-of-a-kind patterns with each piece. Moss, blue orchid, and apricot tones. Adjustable waxed cords. Ecuador

B 18254 Bracelets, Set of 2
Adjustable up to 10½"circ \$30

C 18252 Statement Necklace 33"l \$24

D 18253 Layered Earrings
Silver-plated hooks. 1¾"l \$18

NATURAL TAGUA & ACAÍ JEWELRY

Natural, sustainable tagua nuts are carved and dyed in an array of tones, each element revealing its own unique shape and natural pattern. Colors may vary slightly. Waxed fiber necklace cords are adjustable. Ecuador

E 18246 Dosa Necklace
Can be worn long or doubled. Cotton cord not adjustable. 51"l \$40

F 18248 Emili Earrings
Silver-plated hooks. ¾"l \$28

G 18245 Emili Pendant Necklace
Features natural açai seeds. 29"l; Pendant: 4¼"l \$36

H 18182 Tranquility Necklace 35"l \$38

I 18205 Confetti Necklace
Features natural açai seeds. 31"l \$30

NYRA BRACELETS

NEW Pastel hues make these nine-strand glass beaded bracelets a perfect addition to any outfit. One size fits most. 8"circ. India \$18

J 33478 Goa Coral

K 33477 Goa Blue

TSAMBO WOVEN COLLECTION

NEW Master weavers in eSwatini use their basket crafting skills to hand sew this stunning jewelry with needle and thread. Hand-rolled and hand-dyed sisal. eSwatini

L 84134 2-Strand Necklace
Features batik bone beads. Adjustable black linen cord. 33½"l \$44

M 84135 Layered Necklace
Loop and button closure. 20"l; Pendant: 1½" dia \$38

N 84136 Layered Earrings
Silver hooks. 2"l \$28

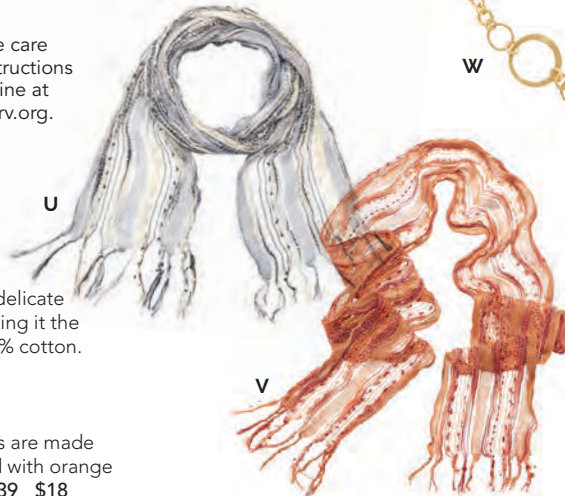
SISAL GRASS FROM ESWATINI



COLORFUL THREADS FROM INDIA



See care instructions online at serrv.org.



O ALARI EMBROIDERED SCARF

NEW This lightweight scarf features delicate hand-embroidered floral details, making it the perfect warm weather accessory. 100% cotton. 75"l x 21"w India 33472 \$48

P DARI THREAD EARRINGS

These unique dangling hoop earrings are made with eye-catching brass and wrapped with orange thread. Brass hooks. 2 1/4"l India 33439 \$18

SUNARA LEAF JEWELRY

Each leaf features textured brass plate on one half, colorful threading on the other. Suede backing. India

Q 32731 Earrings
Brass hooks. 2"l \$18

R 32732 Necklace
Lobster clasp. Adjustable from 22 1/2" – 25 1/2"l.
Pendant: 2 1/4"l \$22

RECYCLED SARI WIRE WRAP JEWELRY

These colorful one-of-a-kind accessories feature delicate wire-wrapping and recycled sari fabric accented with small brass beads. Colors and patterns of fabric will vary—let us choose for you! India

S 33447 Earrings
Brass hooks. 2 1/4"l \$18

T 33446 Bangles, Set of 3 9 1/4" circ \$28



BRASS & TURKANA FROM KENYA



WOVEN SCARF NECKLACES

These unique scarf necklaces are woven with multiple yarns and threads that gather to create a narrow necklace look. Knotted fringe ends. 100% viscose.

84"l x 8"w India \$16

U 33372 Glacial Blue

V 33373 Brick Red

W TULIA BRASS NECKLACE

This brass chain-link necklace is simple and stately, perfect for a night out (or a night in!). S-hook closure. Adjustable up to 34 1/2"l. Kenya 45762 \$58

TURKANA COLLECTION

Tangerine orange, black, and white come together in these handmade accessories featuring turkana glass beads, cowrie shells, and hand-shaped and dyed clay beads. Kenya

X 45765 Earrings
Brass hooks. 2 1/2"l \$24

Y 45763 Necklace
Hook and eye closure. 27 1/2"l \$46



B



C



D



Fashions from India to Indonesia

SHILANI LEATHER COLLECTION

Soft olive leather with tan accents, perfect for everyday use. Antique brass hardware. *India*

A 32718 Slouch Bag

Leather exterior with suede interior. Magnetic closure. Detachable inner pouch has zipper closure. Bag interior has a strap on each side to adjust shape of bag. 29"l shoulder straps. 12½"h x 17"w x 4"d \$148

B 32754 Wallet

Features exterior zipper pocket and snap compartment, which opens to reveal 12 card slots and three cash slots. Zipper section of wallet has middle divider and one credit card slot. Detachable wristlet strap. 7¾"w x 4¾"h x 1"d \$60

C 32719 Waist Bag

Centered zipper. 100% cotton brown twill lining with interior zipper pocket. Attached tan waist strap is adjustable up to 32½"l. Total 45"l. 5½"h x 11"w x 1½"d \$52

D 32720 Tote

Interior lined with 100% cotton tan, patterned fabric. Zipper closure at top. One interior zipper pocket, three open slip pockets. 20"l shoulder straps. Detachable and adjustable crossbody strap is 58"l. 12½"h x 15"w x 5"d \$160

TARAKA LEATHER COLLECTION

Cognac brown bags and wallet made from smooth leather with a hand-cut starburst lace pattern, all lined with a deep chocolate twill. Antique brass hardware. *India*

E 32653 Tote

Magnetic snap closure. One zip and two open interior pockets. Shoulder straps 24"l. 14½"h x 15½"w x 3¼"d \$98

Partnering with SERRV since 1996, artisans in Kolkata gain access to international markets to sell their handcrafts.



F 32654 Crossbody

Zip top closure with exterior open pocket and interior zip pocket. Shoulder strap adjustable up to 54"l.

7½"h x 9½"w x 2½"d \$76

G 32655 Wallet

Zip closure with two open pockets and central zip pocket with card slot on one side. Six card slots. 6¾"l removable wrist strap. 8"h x 4½"w x ¾"d \$48

RIYA LEATHER COLLECTION

Cognac tan leather with hand-stitched chevron pattern and handwoven laced center accent. White and tan floral print cotton lining. Antique brass hardware. *India*

H 33377 Tote

Magnetic closure. Interior features three slip pockets and one zipper pocket. One exterior zip pocket on back. Shoulder straps are 22"l. 14"h x 18"w x 4"d \$160

I 33378 Crossbody

Zip closure. Interior features two slip pockets and one zipper pocket. Adjustable strap up to 54"l. 12"h x 11"w x 2¼"d \$120

J 33379 Wallet

Zip closure and two large open pockets, with central zip pocket and six card slots on side. Lined with a deep chocolate twill. 6¾"l removable wrist strap. 8"w x 4½"h x ¾"d \$48

KALAMKARI FASHION

Colored by all-natural vegetable dyes, these block-printed kalamkari scarves in rich tones are a must-have for your wardrobe. Hemmed edges. 100% cotton. *India*

K 32608 Cool Scarf 78"l x 22"w \$22

L 33475 NEW Lotus Scarf
84"l x 22"w \$26

M 32828 Botanical Bandanas, Set of 2
Features navy and mustard patterns. 22"sq \$18

N SAHANA KIMONO

This delicate, sheer kimono boasts a screen-printed temple tile design in black, tan, and powder blue on a rust background. Fringed ends. Slit hem, longer in back for more coverage. Relaxed fit. 100% cotton. Hand wash. 30"l *India*
32695 \$54

BODRI BATIK LEATHER COLLECTION

NEW Lend a splash of the tropics to your daily wardrobe with the bold blues and greens of this hand-batiked leather collection. *Indonesia*

O 37854 Statement Necklace

Strung on cotton cord adjustable to 45"l. Largest piece: 1"l x 1¾"w \$26

P 37853 Cuff

Adjustable. 7¾"l x 1½"w \$18

JAVA BATIK LEATHER COLLECTION

Bold leather statement pieces feature traditional batik designs and colors for a fashionable and global look. *Indonesia*

Q 37840 Cuff

Adjustable. 7½"l x 1¾"w \$18

R 37839 Statement Necklace

Cotton cord. Adjustable up to 34"l. Center oval piece: 2"l \$26



K



L



M



N

See care instructions
online at serrv.org.



O



P



Q



R



Recycled sari-wrapped beads from Delhi

A BLUE STARBURST KIMONO

Light and airy cover-up adds versatile grab-and-go global style to any wardrobe. Flowing cotton construction has open front, kimono sleeves, fringed ends, and vibrant screen-printed pattern. Slit hem, longer in back for more coverage. 100% cotton, relaxed fit. One size fits most. Hand wash. 31"l India 32445 \$54

SARI BEAD NECKLACES

Every bead of these jewelry pieces is hand wrapped with recycled cotton sari and interspersed with tiny brass beads. Colors and patterns will vary. Wear long or doubled. Lobster clasps. Brass accents. India

- B 32660 Neela 2-Strand**
Adjustable from 45"l-47"l \$42
- C 32286 Long Cool Tones**
Adjustable from 51"l-54"l \$28
- D 32443 Long Multi**
Adjustable from 51"l-54"l \$28
- E 32155 Triple Strand Multi**
Adjustable from 24"l-27"l \$32



Natural leather from Kolkata

ALL-FOR-ONE LEATHER BAGS

Detailed with antique brass hardware, recessed zip closure, open pocket on front with tabbed magnetic closure, and zippered pocket on reverse. Lined interior has floral print pattern, with one slip and one zip pocket. Flat, tapered 23"l handles; detachable crossbody strap adjusts up to 50"l. 11"h x 15"w x 2½"d India \$165

- F 32360 Teal**
G 32645 Jet

KOLKATA CROSSBODY BAGS

You'll love these handmade leather purses for their trim design and ample pockets. Printed interior includes divided front section, one zip pocket, and two slip pockets; exterior has one zip pocket on reverse. Soft matte leather exterior has magnetic flap closure and decorative tab. Leather strap adjusts to 54"l. 10"h x 10"w x 3"d India \$98

- H 32359 Camel**
I 32076 Black



TRIPLET CROSSBODY BAGS

Soft leather bags handmade by skilled leather artisans working near Kolkata. Three main pouches provide ample space. Outer pouches have zip-top closures, middle pouch closes with magnetic clasp. Back has one small zip-close pocket. Fabric-lined interior with single zip pocket. Includes removable leather tassel pull and antique brass hardware. 57"l adjustable strap. 7"h x 10"w x 1"d India \$88

- J 32603 Teal**
K 32602 Tan Colorblock

BATIK JEWELRY

These beautiful pieces feature hand-batiked sengan wood in traditional floral patterns. Tones may vary due to handmade nature. *Indonesia*

L 37823 Tegani Necklace

Cotton cord. Adjustable up to 38"l. \$32

M 37819 Mikara Pendant Necklace

Cotton cord. Adjustable up to 36"l. Pendant: 1¾" dia \$28

N 37820 Mikara Earrings

Steel hooks. 2"l \$22

O 37841 Misha Pendant

Cotton cord. Adjustable up to 27"l.

Pendant: 2¼" dia \$30

P 37842 Misha Earrings

Brass hooks. 2¼"l \$24



Hand-dyed
sengan wood
from Java

Handmade. Nature- inspired.

Q

Hand-printed
cotton from
Mumbai

Q



R

INDIGO DABU FASHION

Each cotton accessory is dyed with natural indigo after block printing with mud to resist the dye, creating a unique, coordinating pattern. Scarves feature rolled and stitched edges. Due to the natural dye, we recommend washing before first use in cold water with 1/2 cup of vinegar. Machine wash cold separately, line dry. *India*

Q 32712 Lajita Kimono 30"l \$54

Features block-printed elephant pattern around bottom hem. One size fits most.

R 32713 Dragonfly Scarf 82"l x 21½"w \$22

S 32714 Lotus Square Scarf 46"sq \$24



O

P



S



S

It's easy being green!

NATURAL BAMBOO



A



B



C



D

RASHAMI BAMBOO SCARVES

NEW Bamboo fibers dyed in a watercolor style. Fringed ends. Hand wash. 70"l x 20"w India \$38

A 33459 Jodhpur Blue

B 33458 Jaipur Pink

C CHANDI STORAGE BOWLS, SET OF 2

Lightweight nesting and lidded natural bamboo bowls. Food safe. Sm: 2¼"h x 4¾" dia; Lg: 3"h x 6" dia Vietnam 92976 \$36

D BAMBOO REUSABLE UTENSIL SET

Reusable set features fork, knife, spoon, straw, and straw cleaner in a muslin drawstring storage bag. 9"l x 2¾"w Vietnam 92940 \$22

REUSABLE TOTE



E



F

RECYCLED SARI



G



H

E FLUTTER BUTTERFLY TOTE BAG

Cotton tote bag masterfully hand embroidered by women in Ahmedabad. 23"l handles. Spot clean. 14½"l x 13½"w India 32723 \$24

RECYCLED SARI TEXTILES

Recycled cotton saris are layered to create these one-of-a-kind textiles. No two alike. Bangladesh & India

F 32745 Reusable Sari Produce Bags, Set of 3

Cotton mesh with sari accent and drawstring closure. Sm: 11½"l x 10½"w; Med: 11¾"l x 10"w; Lg: 13¾"l x 11¾"w \$18

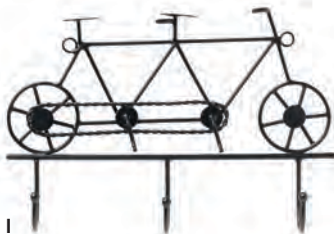
G 46306 Patchwork Kantha Coasters, Set of 4

Comes in a recycled sari pouch. 4"sq \$16

H 33474 NEW Sari Packing Cubes, Set of 3

Two layers with kantha stitching. Zipper closures. Sm: 6½"h x 9"w x 3½"d; Med: 8¼"h x 11¼"w x 3¼"d; Lg: 12"h x 17¼"w x 4"d \$44

RECLAIMED METAL



I



J



K



L

CYCLING ACCESSORIES

Hand crafted and recycled iron accessories are great for the office, bedroom, or entry. India

I 33422 Tandem Bike Hooks

Three hooks with attached hanging rings. 6"l x 9"w \$22

J 34446 Bicycle Bookends

7"h x 4"w x 2½"d \$30

K TIFFIN LUNCH SET

Classic Indian-style lunch set features three stacking steel containers with lids with a metal carrying handle. 9"h x 6" dia India 33429 \$35

L CANDU BIRDHOUSE

NEW Recycled one-of-a-kind birdhouse gets a splash of color from upcycled metal cans and labels. Hinged roof for easy cleaning. Patterns will vary. 1¼"dia opening. 6¼"l x 7"w x 7"h India 32793 \$26

Eco-friendly home solutions from global artisans

UPCYCLED FEEDBAGS



RECYCLED FEEDBAG OUTDOOR ACCESSORIES

NEW Two layers of recycled feedbags stitched into reusable home and garden items. No two are alike! Colors and patterns will vary. Easy to clean. Cambodia & Vietnam

M 14094 Garden Tote

Six interior and six exterior pockets. 10" h x 14½" w x 7½" d \$40

N 14095 Nesting Baskets, Set of 2

Sm: 5" h x 6" dia; Lg: 8" h x 8¼" dia \$38

O 92982 Market Tote

Coconut button closure. 23½" l handles. 11¼" h x 21" w x 7¼" d \$20

P 14096 Placemats, Set of 4

Reversible! 13" l x 18" w \$32

NATURAL SOY & WOOL



HANDMADE SOY CANDLES

Phthalate free. Signature burn time approx. 40 hours, Retreat Tin approx. 30 hours. USA

LAVENDER SPRIG

R 96004 9 oz. Signature Glass \$24

Q 95939 8 oz. Retreat Tin \$14

LEMONGRASS & LIME

96003 9 oz. Signature Glass \$24

95826 8 oz. Retreat Tin \$14

SUGARED GRAPEFRUIT

95966 9 oz. Signature Glass \$24

95968 8 oz. Retreat Tin \$14

S RAINBOW FELTED DRYER BALL

Felted wool reduces static and helps clothes dry faster. Colors will vary. Sold individually. 3" dia Nepal 65811 \$11

T REMNANT SCRUBBING PADS, SET OF 3

Cotton remnants in assorted colors are knit together with loop for easy hanging. Colors vary. 6" sq Nepal 65837 \$18

U YAATRA RAINBOW RETHREAD THROW

This colorful throw is made from recycled clothing, which is unraveled, cleaned, and re-woven. Knotted fringe ends. Machine wash. 60% cotton/40% polyester blend. 60" l x 50" w India 33407 \$34

FAST-GROWING PLANTS



V HAPPY NECKLACE

Natural tagua nut slivers dyed in an array of jewel tones, each slice revealing its own unique shape and pattern. Colors may vary slightly. Adjustable waxed fiber cord. 35" l Ecuador 18151 \$38

GUARD BIRDHOUSES

Hand-painted birdhouses feature etching, wood or clay accents, and 7" hanging cord. Size and shape vary due to natural gourd variations. Opening 1½" dia. Approx. 5-7" h Peru \$38

W 73089 Cardinal

X 73094 Owl

Y MANGO WOOD BACK ROLLER

Hand-carved roller balls and handle are etched and burned with mandala design. 12" l x 4" w x 1¼" h India 33395 \$26

Z MANGO WOOD FOOT ROLLER

Three rows of hand-carved roller balls are housed in a box with etched and burned mandala design. 6½" l x 4½" w x 1¼" h India 33394 \$26

HAITIAN RECYCLED METAL DÉCOR

Oil drums are recycled as dynamic works of art, ideal for placement indoors or out. Each piece is cut, hammered, embossed, and painted by hand for remarkable texture and precise detail. Wall art hangs from an attached hanger or from open space in art. Stakes are removable. Each is crafted by an artisan in Haiti, who earns vital income in incredibly challenging circumstances. *Haiti*

- A 31171 Rooted Leafy Tree Wall Art**
23½" dia \$94
- B 31229 Sunflower Butterfly Wall Art**
8½"h x 8¾"w \$46
- C 31164 Solèy Wall Art** 23½" dia \$94
- D 31203 Sea Turtles Wall Art, Set of 3**
7½"h x 6"w \$42
- E 31216 Geckos Wall Art, Set of 2**
8¾"h x 6¾"w \$38
- F 31230 Bird on a Bike Wall Art**
11½"h x 14"w \$62
- G 31232 Red Rooster Wall Art**
13" dia \$58
- H 31206 Flower Wreath**
12½" dia \$58
- I 31233 NEW Luna Sol Wall Art**
12½" dia \$54
- J 31185 Sunflower Garden Wall Art**
23" dia \$98
- K 31231 Pink Flamingo Stake**
14½"h x 14"w; Stake: 30"l \$45
- L 31219 Teal Blue Crane Stake**
12"h x 10½"w; Stake: 30"l \$45

M RUSTIC ROOSTER GARDEN ART

Partially-recycled metal is cut and attached to a metal frame, then exquisitely painted to create this colorful and sturdy barnyard resident. 12½"h x 13½"w x 4"d India 33318 \$54

N RAINBOW RIDE GARDEN STAKE

NEW Let's go for a ride! Whimsical bicycle stake is hand crafted from recycled metal, and features colorful wheels that spin freely in the wind. 35"h x 12½"w India 32795 \$34

O RUSTIC SUNFLOWER BIRD FEEDER

Handmade from hand-painted, partially-recycled metal. Comes with hanging chain. Latched door at the top for filling. Perfect for sunflower seeds! 17"h x 9¾" dia India 32749 \$34

P RANGENI BIRD FEEDER

This beautiful piece will add color to any part of your yard. Recycled metal is hand painted and decorated with floral and mehndi-style motifs. Attached jute hanger. 7"h x 4½" dia India 33321 \$36

RANI HANGING LOTUS BIRDFEEDERS

NEW Feed your feathered friends from India's national flower. Forged from partially-recycled iron shaped and painted by hand. Antique brass accents and attached hanging chain. India

- Q 33461 Small Pink**
Dish: 2¾" dia x 1"h
Flower: 6½" dia x 5¼"h
Chain: 12"l \$24
- R 33460 Large Purple**
Dish: 4" dia x 1"h
Flower: 7½" dia x 5¾"h
Chain: 12"l \$28

A hand-painted garden



Garden friends & feeders



M



N

Visit serrv.org to see this in motion!

Recycled oil drum art from Haiti



Partnering with SERRV since 1976, artisans in Haiti create beauty from recycled oil drums, hand painting each one in tropical colors.



O



P



Q



R



A



B



C

Happy days are here!

Grilling, gardening, or just gazing at birds, you'll enjoy summer's sights and sounds with these colorful handmade creations.



D



E



F

A SUHANI PAINTED BIRDHOUSE

Hand-painted wood with raised floral and mehndi-style motif. Back removes for easy cleaning. Attached 9" l jute hanger. 1 1/4" opening. 8 1/2" h x 7 1/4" w x 6 1/2" d India 33320 \$38

B MAYURA BIRDHOUSE

NEW One-of-a-kind birdie hut features natural rice straw dyed, twisted, and woven by hand around a sturdy wire frame. 1 1/2" dia opening. 8 1/4" h x 7 1/2" dia Bangladesh 46350 \$30

C RAINBOW CAPIZ WIND CHIME

Bring the colors of the rainbow to your garden or patio with this beautiful cascading chime. Each disc is capiz shell cut, shaped, and dyed by hand. 30" h x 6" dia Philippines 74517 \$38

HOT DOGS KITCHEN TEXTILES

These handmade cotton kitchen textiles feature robust construction to stand up to your toughest kitchen jobs, and an adorable screen-printed bright red dog design. Towel and pot holder have attached hanging loop. Nepal

D 65820 Apron

Adjustable ties and large front pocket. 30" h x 25" w \$36

65821 Dish Towel 26" l x 20" w \$16

View online.

65822 Pot Holder 9" dia \$18 View online.

E ROPANI GARDEN TOOL SET

NEW Lightweight, durable handmade trowel and weeder are sand cast in partially-recycled aluminum. Easy to hold powder-coated and hand-painted handles with colorful stripes and embellishments. Jute hanging loops for easy storage. 10 1/2" l x 3" w India 33469 \$28

F DAHLIA PATIO LANTERNS, SET OF 4

Each of these colorful iron lanterns brings sunshine to your table or patio. Lanterns in aqua, ivy, citron, and poppy with gold interiors. Pair with a votive or LED tea light (not included). Sm: 3" h x 3" dia; Med: 3 1/2" h x 3" dia; Lg: 4" h x 3 1/2" dia; Tallest: 4 3/4" h x 4" w India 33308 \$48

G MULTI-COLOR TAKEAWAY TOTE

Colorful open-top tote is braided and sewn by hand from natural jute and recycled cotton fabrics. Reinforced handles are 21" l. Colors and patterns will vary. 14" h x 13 1/2" w x 7" d India 32263 \$38

CHINDI STRIPE TABLETOP ACCESSORIES

Artisans weave upcycled cotton sari fabric and cotton string with natural handwoven kaisa grass, lending color and texture to these sturdy tabletop accessories. Colors and patterns will vary. Bangladesh

H 46314 Tabletop Caddy 10 1/2" h x 8 1/4" dia \$30

See care instructions online at serrv.org.



G

I 46348 NEW Wine Caddy
Holds two bottles of wine (not included).
14"h x 9"w x 4½"d \$30

J 46349 NEW Fruit Basket
4½"h x 12" dia \$24

K 46315 Coasters, Set of 4 4" dia \$18

L RAINBOW BIKE BASKET

Colorful elephant grass basket comes with two adjustable leather straps to attach to your bike. Brass buckles. 8"h x 13"w x 8"d
Ghana 25124 \$62



H

I

J

K



L



M



N



O



P

Q

M SIESTA SOL HAMMOCK

NEW Take a siesta! This handwoven hammock with fringe detail features traditional Ecuadorian patterns and colors, bringing ethnic style to any afternoon nap. Synthetic blend fabric with cotton blend loops. Hammock: 90"l x 50"w Hanging loops: 3"l Ecuador 18251 \$86

KAISA GRASS PICNIC ACCESSORIES

These kaisa grass and jute baskets are perfect for your weekend excursions. Each features a recycled sari interior, removable for easy washing. Colors will vary—let us choose for you! Bangladesh

N 46303 Pack-a-Picnic Basket
15"h x 15½"l x 12½"w \$52

O 46304 Stow-and-Go Bike Basket
8½"h x 13"l x 9½"w \$48

YAATRA RAINBOW RETHREAD TEXTILES

These soft and sustainable textiles are made from recycled clothing which is unraveled, cleaned, and re-woven. 60% cotton/40% polyester blend. Machine wash. India

P 32799 NEW Pillow
Hidden zipper. Insert included. 18"sq \$30

Q 33407 Throw
Knotted fringe ends. 60"l x 50"w \$34

From the ground up



A PAGODA GARDEN CHIME

Natural bamboo wind chime enhances time spent in the garden or on the patio with bright tones and pagoda-inspired design. Aluminum chimes. Includes two 10" aluminum stakes. 24½"h x 14½"w Philippines 74445 \$60



B



C



D

B JANJALA PLANT HANGERS, SET OF 2

NEW These eco-friendly plant hangers are crocheted by hand from all-natural jute string, and are perfect for small potted houseplants and succulents. Each features loop for hanging. Sm: 26"l, 12"l x 10½"w base; Lg: 32"l, 12"sq base India 33457 \$28

BAMBOO WIND CHIMES

These handmade chimes with bamboo pipes produce a gentle sound. *Indonesia*

C 37191 Round Wind Chime

A perennial bestseller! 36"h x 5" dia \$16

D 37848 **NEW** Gulang Wind Chime

Embellished with a traditionally-inspired charred whirlwind pattern. 44½"l x 8"w \$24

Roll out the welcome mat!

Handmade with coconut fiber



E



F



G

WELCOME MATS

Greet all who visit! Coconut fiber door mats are screen printed with colorful springtime designs. Black rubber backing. *India* \$36

E 32704 Bicycle

18"l x 30"w

F 33419 Sunflower

17"l x 30"w

G 32746 Butterfly

18"l x 30"w

NATURAL BIRDHOUSES

Birdie bungalows are handmade from sustainably harvested materials including galtang vine and takip-asin wood. Densely constructed and finished with rustic details. Opening size approx. 1½" dia. *Philippines*

H 74502 Cozy Tilob

5¼"h x 6"w x 6¾"d \$24

I 74433 Homestead

11"h x 7"w x 7½"d \$36

J 74432 Basket

8"h x 6"w x 8"d \$32

K 74495 Rustic Watering Can

12½"h x 12¼"w \$38

L 74513 Sulok Takip

9½"h x 6"w x 5"d \$20

M 74361 Ipil-Ipil

11"h x 9"w x 6"d \$28

N MASON BEE HOUSE

When mounted on a flat surface, this mason bee house attracts helpful female bees who lay their eggs within the house's tubes. Made from natural, weather-resistant bamboo. 10"h x 9"w x 6"d *Philippines* 74176 \$35

O ARIBO BIRDHOUSE

This colorful birdhouse features banana leaf and recycled sari on wire frame. Hanging loop attached. 1½" opening. 7½"h x 4¾" dia *Bangladesh* 46309 \$24

P LAYERED PEACE WREATH

Galtang vine and takip-asin wood come together to create this rustic, natural wall hanging. Approx. 16" dia *Philippines* 74354 \$28

Q PEACE WREATH

Welcome guests in the spirit of peace and love. Natural wreath of takip-asin wood wrapped in sustainably harvested galtang vine is lovely on its own or when adorned with flowers or lights. Approx. 17" dia *Philippines* 74179 \$28

R GALTANG BUTTERFLY WREATH

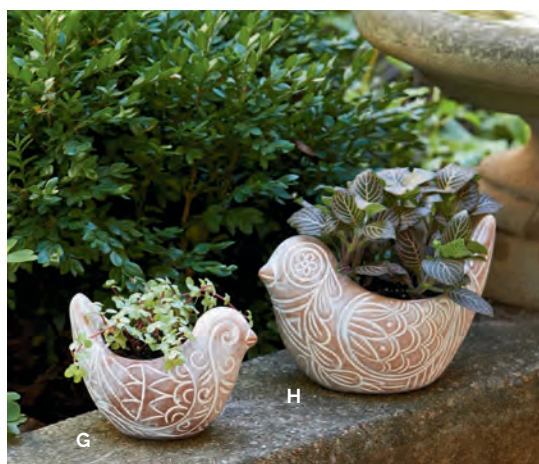
This fluttery butterfly wreath is handmade from sustainably harvested galtang vines. Hanging loop attached. 12"h x 15"w *Philippines* 74508 \$34



Partnering with SERRV since 1976, handcrafters in the Philippines earn income using local vines & woods to create rustic décor.

Playful planters

Handmade terracotta
from Bangladesh



TERRACOTTA ANIMAL PLANTERS

Handmade planters are whitewashed to highlight incredible handmade detail. Each planter has drainage hole. Bangladesh

- A 46323** What's the Hurry Snail
4" h x 6½" l x 2¾" w \$20
- B 46319** Who's Who Owl
5" h x 5" l x 3" w \$20
- C 46321** Happy Hedgehog
3¾" h x 6" l x 3" w \$18
- D 46399** Friendly Elephant
8" h x 11" w \$34



E CITRONELLA BIRD CANDLE

Charming candle helps keep bugs at bay. Whitewashed terracotta container is poured with paraffin citronella candle. When candle burns through, container can be reused as a votive holder or small planter. 3½" h x 5" w x 3" d Bangladesh 46195 \$18

F BASANTA MEADOW PLANTERS, SET OF 3

Whitewashed terracotta is incised with floral designs to create these unique, hexagonal planters. Drainage hole in each pot. Plate: 15" l x 5½" w; Planters: 3¼" h x 4½" w Bangladesh 46322 \$34

BIRD PLANTERS

Sweet terracotta planters are etched by hand with traditional Bangladeshi designs and finished with contrasting whitewash. Interiors have clear waterproof finish. Each has a small drainage hole. Bangladesh

- G 46194** Small
3½" h x 5" w x 3" d \$16
- H 46193** Large
4½" h x 7" w x 4" d \$20

I POND CRITTER PLANTERS, SET OF 3

These little terracotta planters are ready to hold your favorite plants, with plenty of whimsical detail and personality. Each has a small drainage hole. Each approx. 3" h x 3½" w x 5" d Bangladesh 46078 \$28

J NOVO CLAY PLANTERS, SET OF 3

Whitewashed terracotta is incised with stripes and chevrons to create a simple, yet elegant trio of planters. Drainage hole in each pot. Pots: 3¾" h x 3½" dia; Tray: 13¾" l x 5" w Bangladesh 46263 \$34

CLAYMATE WATERING STAKES

These claymates love to play in the garden. Terracotta self-watering stakes help keep dirt moist and plants alive by gradually watering your plants. Bangladesh

- K 46341** Bird & Frog
Bird: 6¾" h x 3" w;
Frog: 6¼" h x 2½" w \$15
- L 46320** Snail & Squirrel
Snail: 5½" h x 4" w;
Squirrel: 7½" h x 3" w \$15

GLOBE PLANTERS

Generously sized terracotta planters with saucers have dynamic geometric design. Interiors have clear waterproof finish. Features drainage hole in each pot. Bangladesh

- M 46188** Large
9" h x 14" dia \$60
- N 46190** Medium
8½" h x 11" dia \$48
- O 46192** Small
7½" h x 8½" dia \$38



Gardening for good

Give your greens a great home in a handmade terracotta pot. You'll also create income for artisans in rural Bangladesh, where handcrafting is a vital source of income.



WIRE PLANT STAND SETS

Partially recycled iron plant stands have a clean, minimal design and a coppery weatherproof finish to protect against outdoor elements. *India*

P 32743 Small, Set of 2 Sm: 6"h x 4½" dia; Lg: 8"h x 6" dia \$24

Shown with medium and small Bandhu Planters.

Q 33311 Large, Set of 2 Sm: 13¼"h x 9" dia; Lg: 18"h x 11" dia \$68

Shown with medium and small Globe Planters.

R SPIRAL MACRAMÉ PLANT HANGER

Knot your average plant hanger! Handmade macramé plant hanger is knotted by artisans in Bangladesh using cream colored cotton cord. Includes loop for hanging. Holds planters up to 8" dia. Planter not included. 37"h *Bangladesh* 46265 \$16

BANDHU PLANTERS

Whitewashed terracotta is incised with stripes to create a simple striped planter. Great for indoor or outdoor use. No drainage hole. *Bangladesh*

S 46268 Large 7½"h x 7½" dia x 4¼" dia base \$26

T 46267 Medium 6¼"h x 6¼" dia x 3½" dia base \$22

U 46266 Small 4¼"h x 4¼" dia x 2½" dia base \$18

V HAND-CARVED MANGO WOOD PLANT STAND

This sustainably sourced mango wood plant stand features a beautiful hand-carved texture. Three removable legs for easy storage. 8¼"h x 8" dia *India* 32639 \$30

ETCHED CYLINDER PLANTERS

Terracotta planters boast hand-etched detail and modern design. No drainage hole. Interior has clear waterproof finish. *Bangladesh*

W 46208 Small Etched Cylinder Planter 6½"h x 7" dia \$30

X 46207 Large Etched Cylinder Planter 8½"h x 9" dia \$36

SMOOTH MANGO WOOD PLANT STANDS

Sturdy two-piece plant stands made from mango wood are carved, burned, and sanded. Hand-etched design on edges with whitewash contrast. Pieces lie flat for easy storage. *India*

Y 32423 Small 7"h x 8" sq \$26

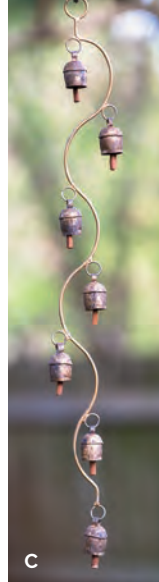
Z 32424 Large 9"h x 10" sq \$30



A



B



C



D



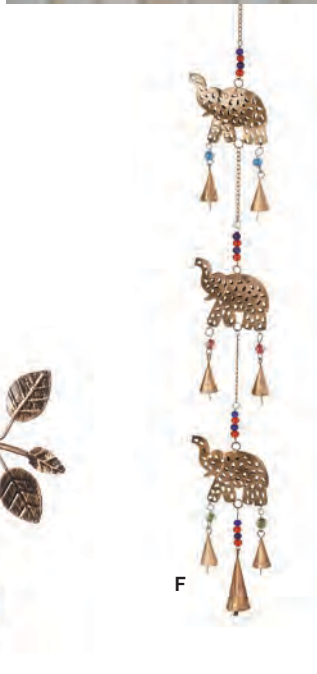
H



I



E



F



G



J



K

RECYCLED IRON CHIMES

These unique and artistic wind chimes are handcrafted with recycled iron, then painted and adorned with brass bells and/or colorful glass beads. For use indoors or out. Handmade by artisans in northern India, each of whom earns a fair wage and gains access to business training through their handcrafts. *India*

- A 34562 Golden Bell**
23½"l x 16½"w \$28
- B 34166 Beaded Lattice**
23"h x 15"w \$40
- C 34561 Wavy**
25"l x 2½"w \$32
- D 34898 Minted Garden**
18"h x 17"w \$26
- E 32495 Owl**
21"h x 15½"w \$28
- F 32748 Elephant Herd**
32½"h x 3¾"w \$18
- G 33418 Halako Circle**
38"l x 5"w \$32

CAROUSEL WIND CHIMES

Shimmery carousel chimes feature some favorite high flyers. Each strand is dotted with colorful glass beads and finished with a small iron bell. Recycled iron with hand-painted finish. *India*

- H 33109 Dragonfly**
21"h x 5"dia
- I 32138 Bird**
23"h x 6"dia

J ZOLA ZEN DÉCOR

NEW Quiet metal art turns any patio or garden into a place of relaxation. Features hanging brass rings and wooden clapper which move gently in the wind. 35"l x 4"w *India*

K CANDU WIND CHIME

NEW This one-of-a-kind wind chime features melodious tubular chimes accented with upcycled metal cans and labels. Patterns will vary, let us choose for you. S hook for hanging. 29"l x 5¼"h *India*

Partnering with **SERRV** since 2011, artisans in Moradabad use local wood & recycled metal to craft these eco-friendly garden accents.





L



M



N



O



P

Q



R



S



T

IN THE SPOTLIGHT

Recycled Metal

Reclaimed metal scraps in India become whimsical garden art.

L LOTUS RAIN CHAIN

NEW Partially-recycled rain chain is perfect for guiding rain in a beautiful flow. Features metal lotuses with a copper finish, plus hanging brass bell at the end. 60"l x 4"w India 33455 \$38

RECYCLED METAL BIRD FEEDERS

These whimsical bird feeders are crafted by artisans in India using recycled metal. India
M 32765 Acorn Bird Seed Holder
 Removable top for easy filling. Antique copper finish. Perfect for sunflower seeds. 8"h x 4½" dia; 8"l hanging chain \$30
N 32752 Clever Kitty Suet Holder
 Antique brass finish. Fits standard suet block. 10"h x 7½"w x 2"d \$24

O 32750 Crescent Moon Seed Holder
 Glass walls. Wire hanging bar at top. Sliding door for easy filling. 12"h x 8½"w x 3½"d \$42

MAHALI LANTERNS

Iron minaret tops, mango wood frames, and glass windows make these handcrafted lanterns perfect for LED tea lights or votives (not included). Latch closures. India
P 32769 Small 10"h x 5"sq \$26
Q 32768 Large 11¾"h x 5¾"sq \$30

R ROOSTER RAIN GAUGE STAKE

Recycled metal rooster with antique copper finish sits on top of a removable stake. Glass rain gauge

tube holds up to 5" of water. Stake unscrews into multiple pieces. 35½"h x 10"w x 2½"d India 32751 \$38

ECO-IRON GARDEN ACCESSORIES

Partially-recycled iron is stamped in a beautiful sunburst pattern and finished with an antique copper shine. Weatherproof coating. Suitable for outdoor use. India
S 33316 Hanging Birdbath
 Perfect for water or seed. Hangs from a 17"l, 3-strand chain. 19"h x 15½" dia \$45
T 33317 Watering Can
 Holds approx. 58 oz. 10"h x 4½"w x 14½"d \$32

Source Code

Customer Number



Learn about our commitment to the environment: serrv.org/sustainability

In **Kenya**, our partners were able to build a 100-foot water well that services 100 artisan families in Kisii.



In **Bangladesh**, artisans planted hundreds of trees to combat deforestation.



So much more than trade

With a reliable fair trade partner in SERRV, artisans around the world are able to invest in their communities. That includes tackling climate change challenges.



In **India**, wood carving artisans received solar powered lanterns from our partners as a source of reliable and eco-friendly light.



In **Nepal**, our partners replaced a kerosene-burning kiln with an eco-friendly electric kiln for potters in Thimi.