

**IMPORTANT WARRANTY INFORMATION BELOW:  
PLEASE READ, FILL OUT AND RETURN ENCLOSED WARRANTY CARD TO  
ENSURE WARRANTY COVERAGE.**

THIS WARRANTY COVERS THE LEM PRODUCTS .35 HP MOTOR 602SSA.  
THE WARRANTY IS EXTENDED TO THE ORIGINAL PURCHASER ONLY.

**WARRANTY DURATION:** This product is warranted to the original purchaser for a period of two (2) years from the original purchase date. **EACH UNIT COMES WITH A WARRANTY CARD, WHICH MUST BE FILLED OUT COMPLETELY AND RETURNED IMMEDIATELY, WITH A COPY OF THE PURCHASING RECEIPT. FAILURE TO RETURN YOUR WARRANTY CARD WILL LIMIT WARRANTY TO 90 DAYS WITH PROOF OF PURCHASE.**

**WARRANTY COVERAGE:** This product is warranted against defective materials or workmanship. The warranty is void if the product has been damaged by accident, misuse, neglect, modification or improper service or repairs by unauthorized personnel. It is also void if damaged in shipment or by other causes not arising out of defects in the materials or workmanship. This warranty does not extend to any units which have been in violation of written instructions furnished, or to units which have been altered or modified.

**WARRANTY DISCLAIMERS:** This warranty is in lieu of all warranties expressed or implied, and no representative or person is authorized to assume any other liability in connection with the sale of our products. There shall be no claims for defects or failure of performance under any theory of sort, contract or commercial law including, but not limited to negligence, gross negligence, strict liability or breach of contract. The manufacturer declines all responsibility for damage to persons, things or animals arising from the failure to comply with the norms contained in this manual. The manufacturer reserves the right to make modifications at any time to the models while maintaining the main characteristics described herein. The manufacturer also declines all responsibility for any errors in compiling this manual.

**WARRANTY PERFORMANCE:** During the above two year warranty period, a product with a defect will either be repaired or replaced after the product has been inspected by an LEM Service Technician. **LEM reserves the right to refuse warranty performance or product evaluation unless the original sales receipt or warranty card is on file.** The repaired product will be in warranty for the balance of the two year warranty period. No charge will be made for such repair or replacement.

**IMPORTANT NOTICE:** If any parts are missing or defective, please contact our Customer Service Department for assistance at 1-877-536-7763. (M-F 8:30am to 4:30pm EST) **DO NOT RETURN TO THE STORE WHERE THE MOTOR WAS PURCHASED.**

**LEM PRODUCTS MERCHANDISE RETURN POLICY WARRANTY SERVICE:**

To obtain service under terms of this warranty, please contact us at 1-877-536-7763 to obtain authorization prior to returning the merchandise. No merchandise will be accepted without prior authorization. Please return the product pre-paid in the original packaging if possible, enclose a copy of your receipt, (keep a copy of your proof-of purchase for your records.) and include a written explanation of the issue. Ship to LEM Products, 4440 Muhlhauser Rd, Suite 300, West Chester, OH 45011-9767. LEM Products is not responsible for damage incurred in shipping, make certain to pack product properly. Return shipping charges are the responsibility of the purchaser. Packages returned to LEM should be insured for the value of the product to cover any damages that may occur during shipping.



LEM Products • 4440 Muhlhauser Road, West Chester, OH 45011 • PH: 1-877-536-7763 • www.lemproducts.com

THE LEADER IN GAME PROCESSING



USE & MAINTENANCE

# LEM .35 HP Motor

INSTRUCTIONS  
FOR LEM .35HP  
MOTOR  
MODEL  
602SSA



PLEASE READ BEFORE OPERATING EQUIPMENT

LEM Products • 4440 Muhlhauser Road, West Chester, OH 45011

1-877-536-7763 • www.lemproducts.com

## SAFETY INSTRUCTIONS:

When using electrical appliances, basic safety precautions should be followed to reduce the risk of fire, electric shock, and injury to persons, including the following:

1. Read all instructions before using the appliance.
2. Place unit on a firm level surface.
3. To avoid fire or shock hazard, plug the appliance directly into a 120V AC electrical outlet.
4. To protect surfaces from damage, lift, do not push or pull unit.
5. Use extreme caution when operating grinder in the presence of children.

### KEEP OUT OF REACH OF CHILDREN

6. Always unplug unit when not in use, when changing parts or cleaning.
7. When unplugging, be sure to pull by the plug and not the cord.
8. To disconnect unit, turn switch to OFF position, then remove plug from outlet.
9. Thoroughly clean the unit and all parts after each use with hot soapy water.

### ALWAYS KEEP WATER AWAY FROM ELECTRICAL MOTOR

10. Use appliances only for intended household use as described in this manual. Any other use not recommended by the manufacturer may cause a malfunction or injury and void warranty. The use of attachments not recommended or sold by LEM Products may cause hazards and will void warranty.
11. To avoid the risk of fire, do not use extension cords.
12. Do not attempt to repair or adjust any electrical or mechanical functions on this unit without contacting an LEM repair technician Toll Free at 877-536-7763. Doing so will void warranty. Servicing should be performed as directed by qualified personnel only.
13. Discontinue use if plug or outlet is hot. It is recommended that the outlet be replaced if plug or outlet is hot to the touch.

### FOR SAFETY, DISCONNECT MOTOR WHEN NOT IN USE:

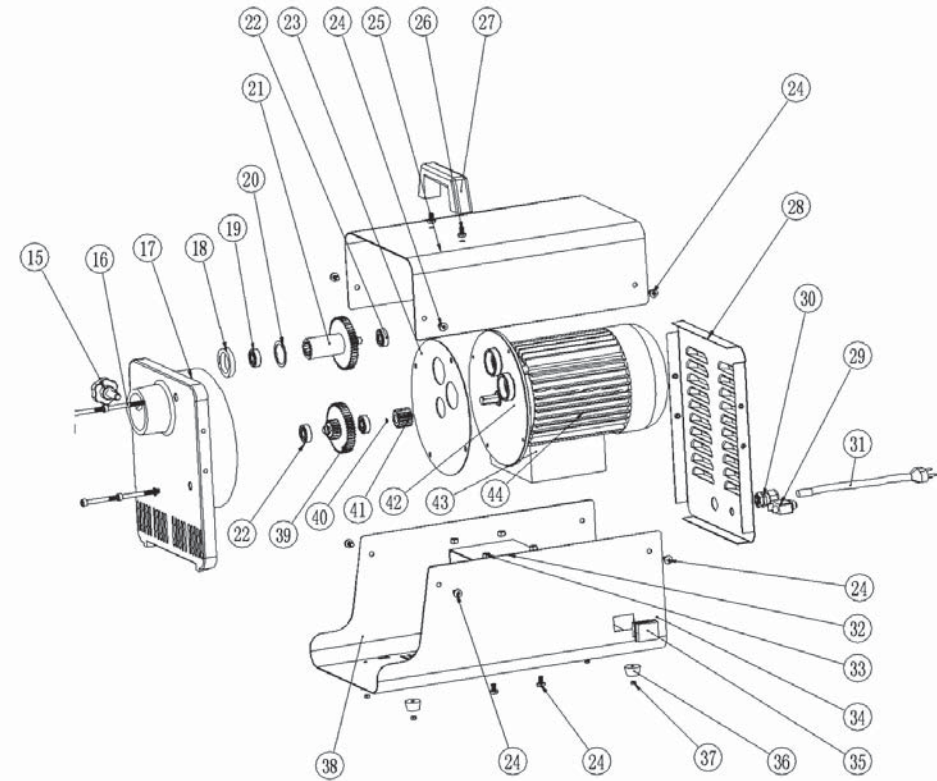
When motor is turned off, cooling fan will no longer operate. Do not touch housing during cool down period. Housing will take a few minutes to cool down after unit is turned off. Store unit in a cool, dry area.

### CIRCUIT BREAKER INFORMATION:

Your LEM motor is equipped with a circuit breaker to protect the unit. In the event of a power disruption, abnormal operation or overheating, the motor will temporarily shut down to prevent damage. If this should happen, follow the seven steps listed below:

- Step 1: Turn On/Off switch to off.
- Step 2: Unplug unit.
- Step 3: Check for obstruction in attachment.
- Step 4: Wait 1 or 2 minutes, then plug unit into wall outlet again.
- Step 5: Push Restart Button and release. (Located on back panel of motor.)
- Step 6: Turn switch on.
- Step 7: Resume Operation.

## PARTS LIST FOR 602SSA MOTOR



#	Description	Q'ty	#	Description	Q'ty
15	Star Bolt	1	30	Fastener for the Power Cord	1
16	Allen Screws M6 for Front Panel	4	31	Power Cord	1
17	Front Panel	1	32	Brace	1
18	Grease Seal	1	33	Hex Nut M6	2
19	Roller Bearing	1	34	S/S Lower Housing	1
20	Main Washer	1	35	Switch	1
21	Main Gear	1	36	Plastic Feet	4
22	Bearing 608	3	37	Hex Nut M4	6
23	Rubber Pad	1	38	Phillips Screw M4 for Feet	5
24	Screws	10	39	Step Gears	1
25	S/S Upper Housing	1	40	Clip Spring	1
26	Handle Screw	2	41	Pinion Gear	1
27	Handle	1	42	Front Panel of the Motor	1
28	Back Panel	1	43	Electric Box	1
29	Circuit Breaker	1	44	Motor	1