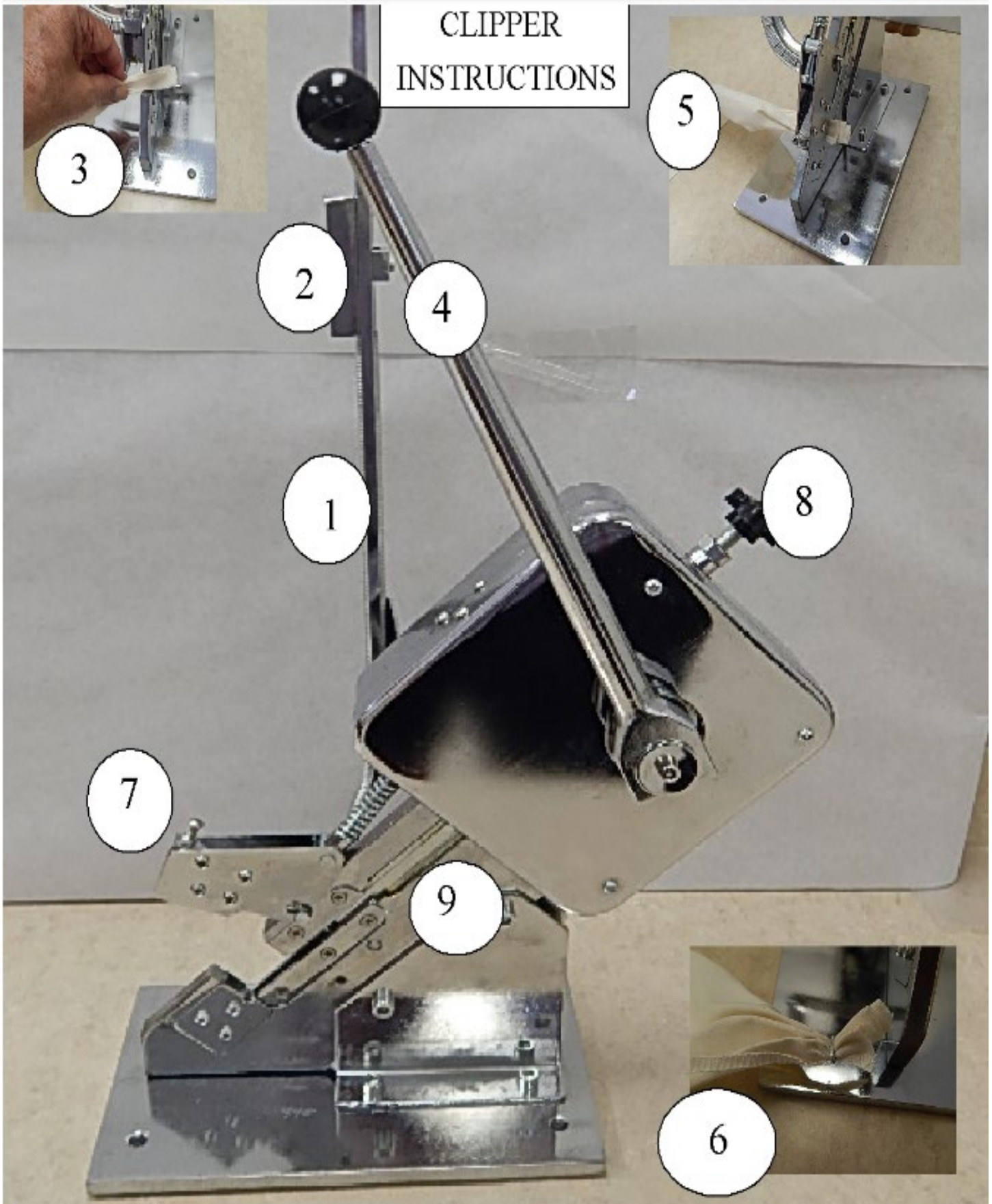


# CLIPPER INSTRUCTIONS



1. Clip Tower: Remove weight and fill with at least 100 clips
2. Weight: Must always be in place for clips to push forward
3. Clipper opening: Place twisted casing to be clipped in opening
4. Handle: Pull down to advance and close clip
5. Clipper in the down/closing position
6. Larger clip is needed if casing is not enclosed
7. Adjustment screw: After 4,000 clips may need adjusting. Slit must be the same at top and bottom to avoid jamming
8. Clip Closing Adjustment: May need adjustment according to thickness of product being closed
9. Clip slide: Must keep greased. If dry clips will jam.