

# USER INSTRUCTION

## (1) Amazon Echo Voice control

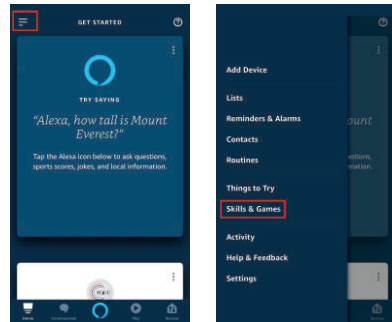
How to control “OPEN-LIT” smart device with Amazon Echo?

### 1. What you need to get started.

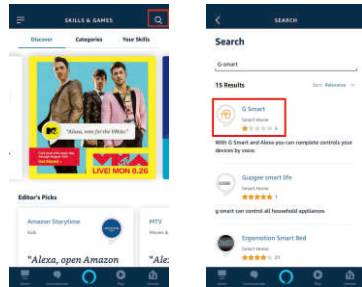
- 1.1 Download "OPEN-LIT" App, Power on smart devices, configure them with "OPEN-LIT" App;
- 1.2 Plug in Echo, download Amazon "Alexa" App and configure Echo with "Alexa" App.

### 2. Enabel the “Gizwits” skill and discover Open-lit device in the Alexa app.

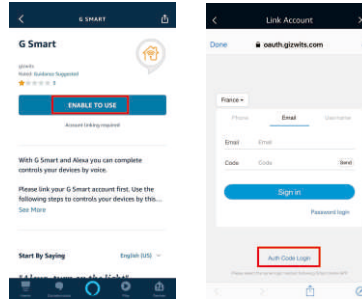
- 2.1 Tap the “setting” icon on the left-upper corner to expand the setting list;
- 2.2 Select and tap the setting of “Skills & Game” to enter “ALL SKILLS” center;



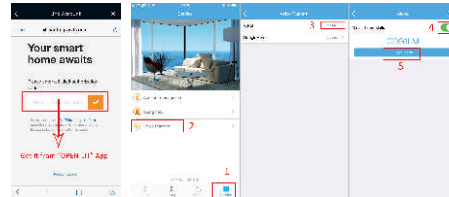
- 2.3 Input “G Smart” and tap the search button on the top;
- 2.4 Touch “G Smart” from the list to view more details;



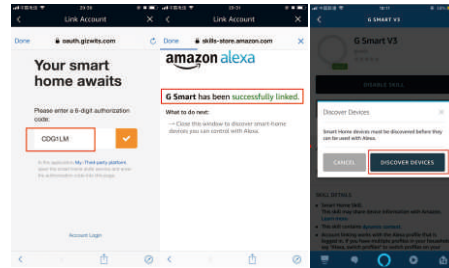
- 2.5 Tap the “Enable” button to apply for use;
- 2.6 Tap “Auth Code Login”;



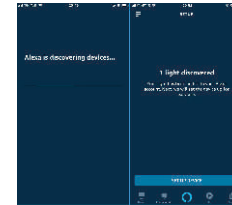
- 2.7 Get the “Authorization Code” from “Open-lit” app;
- 2.8 Open the “Open-lit” app, tap “service” icon , tap “Voice platform”, choose “Alexa”, open the “Smart home skills” button, tap “Copy Auth code”;



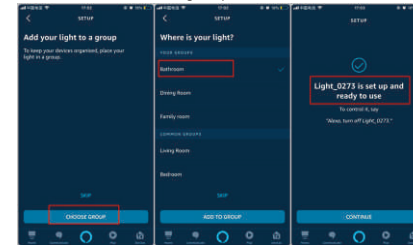
- 2.9 Open Alexa App, copy the auth code into the Gizwits skill “Account Login” dialog box;
- 2.10 Then App will show “G Smart” skill has been successfully linked;
- 2.11 Tap “ DISCOVER DEVICES”;



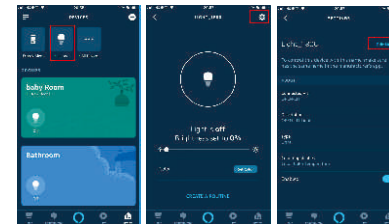
- 2.12 Alexa will discover all open-lit smart devices.
- 2.13 Add the device to a group.



- 2.14 Add the device to a group.



- 2.15 Tap “Lights” to Devices List--> Tap the setting icon on the right-upper corner --> Edit device name.



### Note:

- A. Alexa control the device by identifying the device name;
- B. If there are devices with same name, Alexa will control the devices at the same time;
- C. The language of the device information should be same with Alexa Echo. If Alexa Echo is in English, the name of light should be in English, otherwise the light would not be recognized by Echo.

### 3. Voice control.

- 3.1 After configuring device name, you can ask Alexa to control devices accordingly.
- 3.2 You can wake Alexa up by saying Alexa every time. Comment Sentences (Take light as example)  
Alexa , turn on “X Light”  
Alexa , turn off “X Light”  
Alexa , Set the brightness of “X Light” to 10 20 30 50 100.....%  
Alexa, set “X Light” to warm white/cold white/daylight white/ soft white....."  
Alexa, set “X Light” warmer/softer/cooler.....  
Alexa , Turn the “X Light”to red/blue/green/purple.....

### Note:

There are some of OPEN-LIT smart devices can be switched to different light types. Please delete the device then re-add it if the device has been switched. (such as if a RGB device has been switched to CCT type, you need to delete this RGB device then re-add CCT device to Alexa)

## (2) Google Assistant Voice control

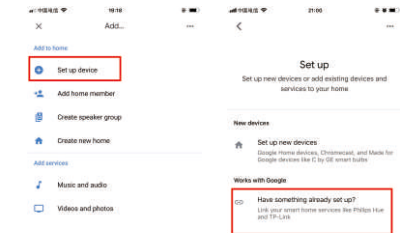
### How to control "OPEN-LIT" smart device with Google home?

#### 1. What you need to get started.

- 1.1 Download "OPEN-LIT" App, Power on smart devices, configure them with "OPEN-LIT" App;
- 1.2 Plug in google home/mini, download "Google home" App and configure google home with App.

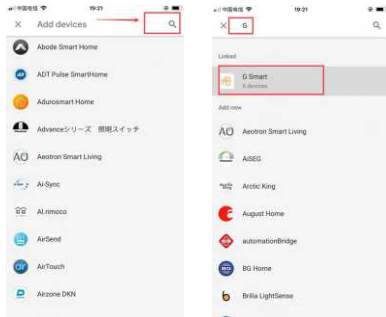
#### 2. Connecting "open-lit" app with "Google home" app---Binding "G Smart" Platform Account and select device.

- 2.1 In the home page, click on "Add", go to the "Add" page, and click on "Set up device", go to the "Set up" page, then you can choose Google services.
- 2.2 Click on "Have something already set up?" then go to the page of service platform selection.



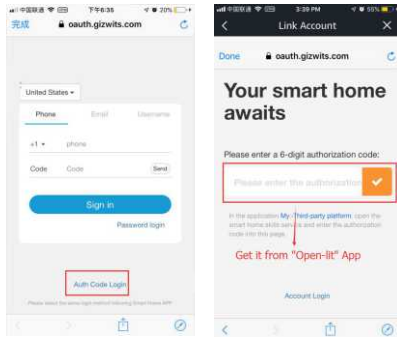
- 2.3 Click on "Search" then input "G Smart".

- 2.4 Click on the "G Smart" to enter the login page of smart home APP.

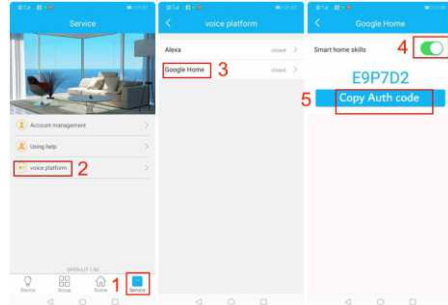


- 2.5 Tap "Auth Code Login";

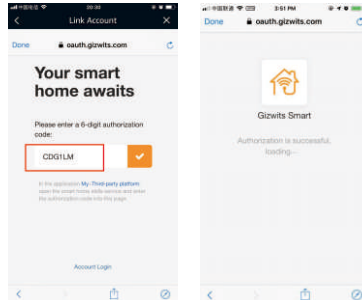
- 2.6 Get the "Authorization Code" from "Open-lit" app;



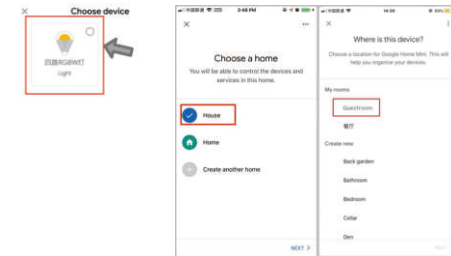
- 2.7 Open the "Open-lit" app, tap "service" icon, tap "Voice platform", choose "google home", open the "Smart home skills" button, tap "Copy Auth code";



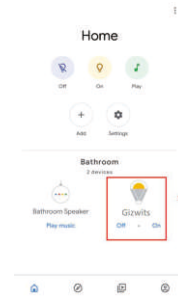
- 2.8 Open google home App, copy the auth code into the Gizwits skill "Account Login" dialog box;
- 2.9 "G Smart" Platform account is successfully binding;



- 2.10 Select the devices that will be controlled by Google Home after account authorization;
- 2.11 After selecting some devices, click on "continue" to choose the location of devices;

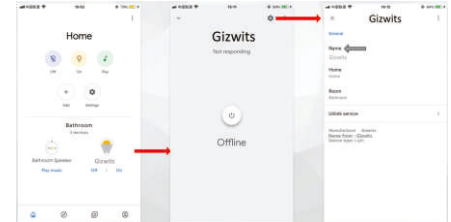


- 2.12 After setting the location of the device, the APP automatically returns to the home page and you can view the selected devices.



### 3. Setting Device's Name :

- 3.1 Google Home is controlled by [Name].
- 3.2 When there exists the same device name, Google Home will conduct synchronous operations.
- 3.3 Operations as follow :  
Click on "Device" - -> Enter the page of device's details (as shown)  
--> Click on "Set" - -> Select device name - -> Modify device name.



( Device contents in need of modification need to match the language currently set by Google Home speaker, otherwise the speaker can not control the device.)

### 4. Voice control.

- 4.1 After setting the device name, you can send voice commands to the Google Home to control the device.
- 4.2 Recognition words: Ok Google or Hey Google Common-used sentences (Take light as an example) :  
Comment Sentences (Take light as example)  
Hey Google, turn on "X Light"  
Hey Google, turn off "X Light"  
Hey Google, Set the brightness of "X Light" to 10 20 30 50 100.....%  
Hey Google, set "X Light" to warm white/cold white/daylight white/ soft white....."  
Hey Google, set "X Light" warmer/softer/cooler.....  
Hey Google, Turn the "X Light" to red/blue/green/purple.....

#### Note:

There are some of OPEN-LIT smart devices can be switched to different light types. Please delete the device then re-add it if the device has been switched. (such as if a RGB device has been switched to CCT type, you need to delete this RGB device then re-add CCT device to google home)