

TRUSTED SINCE 1926

BONIDE[®]

All Seasons[®]

Horticultural & Dormant Spray Oil



Use year-round¹

Controls insects and diseases as listed on
this label

Dormant & growing season insect spray

ACTIVE INGREDIENT:

Mineral Oil*98.00%

OTHER INGREDIENTS:2.00%

TOTAL:100.00%

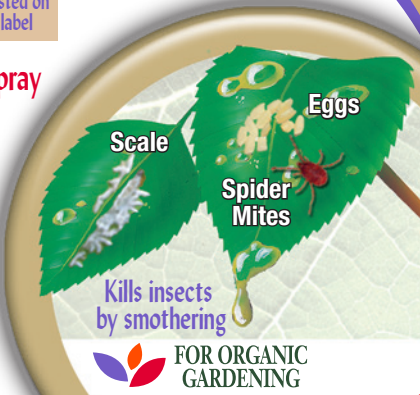
(Superior type U.R. Min 92%) *Contains Petroleum Distillate

EPA Est. No. 4-NY-1 EPA Reg. No. 4-80

¹ Do not apply when temperature is
greater than 90° F or less than 40° F.

Keep Out Of Reach Of Children

CAUTION (See Back Panel for Additional
Precautionary Statements and First Aid)



Kills insects
by smothering



**FOR ORGANIC
GARDENING**

All **Seasons**[®] Horticultural **Spray Oil** Ready to Spray

- ✓ **CONTROLS** Scale Insects, Mealybugs, Apple Aphids, European Red Spider Mites, Leafminers, Leafrollers, Light Brown Apple Moth, Powdery Mildew, Rust and other insects and diseases listed on this label
- ✓ **USE** on pears, cherries, peaches, asparagus, corn, peppers, roses, and other crops as directed on this label

Store and transport in an upright position.
EPA Reg. No. 4-80 EPA Est. No. 4-NY-1
Buyers Guarantee Limited to Label Claims
©Bonide Products, LLC All Rights Reserved
Distributed by:
Bonide Products, LLC
6301 Sutliff Road
Oriskany, NY 13424



BN

DIRECTIONS FOR USE

It is a violation of Federal law to use this product in a manner inconsistent with its labeling.

Do not apply this product in any way that it will contact other persons or pets, either directly or through drift. Keep other persons out of the treated area during application. Do not allow persons or pets to enter the treated area until sprays have dried.

NOTE: DO NOT APPLY ALL SEASONS® HORTICULTURAL AND DORMANT SPRAY OIL WITH SULFUR SPRAYS OR WHERE SULFUR IS ON THE FOLIAGE. TO DO SO MAY CAUSE FOLIAGE INJURY, LEAF DROP. DO NOT APPLY ALL SEASONS® HORTICULTURAL AND DORMANT SPRAY OIL AT ABNORMAL TEMPERATURES (ABOVE 90° F) OR WHEN PLANTS ARE DRY (SUFFERING FOR WANT OF MOISTURE) AS IT MAY CAUSE LEAF DROP DUE TO "SHOCK."

Mixture ratios vary. Read and use according to application directions. Apply using a good pressure spray hose-end or watering can.

This product is a self-emulsifying spray oil, composed of paraffinic oil with emulsifier and spreader sticker, which envelop, wet and smother over wintering eggs of European red spider mites, Adelgids, scale insects, apple aphids, bud moths, leaf roller (redbanded, obliquebanded, fruittree), light brown apple moth, red bug, codling moth larvae, psylla (adults), blister mites, galls, whitefly larvae and mealybugs on fruit trees, shade trees, vegetables, ornamentals, shrubs and roses.

ALL SEASONS® HORTICULTURAL AND DORMANT SPRAY OIL may be used at the DORMANT STAGE (before buds show green tissue), GREEN TIP STAGE (when leaves of blossom buds are bursting and show about 1/8 to 1/4 inch of green color), DELAYED DORMANT STAGE (when the leaves

of the blossom buds are out from ¼ to ½ inch), and during the GROWING SEASON.

Do not use hose-end sprayer application in home greenhouses or on houseplants. Hose-end sprayer applications may be made only when specified application rates are between 2 ½ and 5 tablespoons oil/1 gallon of water.

SHAKE WELL. Spray until plant is thoroughly saturated and spray solution runs off plant. For trees, wet entire surface of branches, main limbs and trunk. Give special attention to underside of limbs. Make application when the temperature is above 40°F.

HOW TO USE READY-TO-SPRAY CONTAINER

1. **Shake container thoroughly**, then attach to garden hose.
2. Turn on water supply at the source. Water pressure will build in hose since the sprayer is already in the “OFF” position.
3. To apply product, bend safety tab and turn the control valve clockwise to the “ON” position.
4. When spraying is complete, turn the control valve back (counterclockwise). Turn the water off. Disconnect hose from applicator and store product in original container.

FRUIT, NUTS & BERRIES

CROP *Asterisk denotes crop not approved in California.	PESTS *Asterisk denotes pest not approved in California.	TIMING/RESTRICTIONS
Acerola (Barbados Cherry)*Atemoya* Carambola (Star Fruit)* Rambutan*	Aphids, Mites, Beetle Larvae, Leafminers, Thrips, Leafhopper, Whitefly, Caterpillars, Alternaria Leafspot, Gummy Stem Blight, Powdery Mildew, Rust Cucumber Mosaic Virus, Papaya Ringspot Virus, Pepper Mottle Virus, Potato Leafroll Virus, Potato Virus Y, Tobacco Etch Virus, Watermelon Mosaic Virus 2, Zucchini Yellow Mosaic Virus	Spray once or twice weekly depending on the rapid growth of the crop and/or vector pressure Spray as needed.
Almonds, Apricots, Cherries, Nectarines, Peaches, Pistachio	Black Scale, European Fruit Lecanium Scale, Frosted Scale, Olive Scale, San Jose Scale, Brown Mite Eggs, European Red Mite Eggs, Aphid Eggs, Fruit Tree Leafroller* (Eggs), Wintering Phytocoris* (only on pistachio), Tent Caterpillars*	DORMANT AND DELAYED DORMANT: Re-spray as needed. European Fruit Lecanium Scale and European Red Mite Eggs: Apply from Green Tip to Delayed Dormant. San Jose Scale: Apply from Dormant, Green Tip to Delayed Dormant. For use on pistachio, apply as a dormant treatment and/or trees may be sprayed after harvest.

CROP *Asterisk denotes crop not approved in California.	PESTS *Asterisk denotes pest not approved in California.	TIMING/RESTRICTIONS
	Powdery Mildew* (Cherries, Nectarines and Peaches only)	Cherries: Preharvest Use: Use up to pit hardening stage. Apply at 10-14 day intervals – shorten interval when disease conditions are severe. Trees may be sprayed after harvest to maintain control and reduce overwintering inoculum. Nectarines/Peaches: Begin at 5% bloom and continue at 10-14 day intervals until terminal growth phase stops. Do not apply to oil sensitive varieties.
	Scales, Two-spotted Spider Mite, Pacific Mite, European Red Mite, Brown Mite	FOLIAR SPRAY: Spray as needed.
	White Peach Scale on Peaches: Only for use in Georgia, Florida, South Carolina, North Carolina, and Alabama	DORMANT: Apply before buds begin to swell in the spring. Make 2 applications 7-14 days apart, or according to local Cooperative Extension Service recommendations, during the dormant period.

CROP *Asterisk denotes crop not approved in California.	PESTS *Asterisk denotes pest not approved in California.	TIMING/RESTRICTIONS
Apples	European Fruit Lecanium Scale Olive Scale, San Jose Scale, European Red Mite Eggs, Rust Mite, Rosy Apple Aphid Eggs, Apple Aphid Eggs	DORMANT OR DELAYED DORMANT: Spray as needed. Rust Mite: Apply during the delayed dormant timing.
	Codling Moth*	Restriction: Use to control first generation early instar stages only.
	Leafroller (red banded, oblique banded, fruit tree), Apple Red Bug, Scurfy Scale, European Red Mite, Bud Moth, Light Brown Apple Moth, Red Bug	GREEN TIP TO DELAYED DORMANT: Spray as needed.
	San Jose Scale, Forbes Scale	DORMANT, GREEN TIP TO DELAYED DORMANT: Spray as needed.
	Powdery Mildew	Apply at tight cluster and continue every 10-14 days through second cover spray. Use the 10-day spray interval when disease conditions are severe.

CROP *Asterisk denotes crop not approved in California.	PESTS *Asterisk denotes pest not approved in California.	TIMING/RESTRICTIONS
	Scales, Mites including: Two-spotted Spider Mite, Pacific Red Mite, European Red Mite, Rust Mite, Leafhopper*, San Jose Scale, Rosy Apple Aphid*, Fruit Tree Leafroller*	FOLIAR SPRAY (Post Bloom): Apply every 10-14 days depending on level of pest pressure. Trees may be sprayed after harvest to maintain control and reduce over-wintering pressure. Do not apply oil to sensitive varieties.
Avocados	Avocado Brown Mite, Thrips, Persea Mite	Apply through late fall. Re-apply as needed. California: Consult with your local University of California Cooperative Extension Service for proper timing and application parameters.
Bananas Plantains	Black Leaf Streak (<i>Mycosphaerella fijiensis</i>), Black Sigatoka (<i>Mycosphaerella fijiensis</i> var. <i>difformis</i>), Yellow Sigatoka (<i>Mycosphaerella musicola</i>)	Begin application when disease first appears and continue every 10-15 days during rainy periods. Restriction: Do not apply when daytime temperatures exceed 80°F as injury may occur. Phytotoxicity may be affected by the quantity of oil used, vigor of trees and temperature at the time of application.

CROP *Asterisk denotes crop not approved in California.	PESTS *Asterisk denotes pest not approved in California.	TIMING/RESTRICTIONS
		Bag fruits, or use a directed spray on unbagged fruits. Bagged fruit improves crop safety whereas unbagged fruit may show phytotoxicity. This application is also effective in loosening Sooty Mold Fungus and in preventing its formulation by the control of Aphids, Mealybugs, Scales and Whitefly.
Blueberries Bushberries Caneberries Raspberries	Mites, Powdery Mildew, Rust, Sawfly (eggs)*, Scales*, Aphids, Mealybug	Spray for optimum coverage of leaf surfaces. Spray as needed.
Figs	Fig Scale	DORMANT OR DELAYED DORMANT: Spray as needed.
	Mites, Mealybug, Scale	Apply as foliar spray.
Grapes	Mealybug, Mites, Leafhopper*, Whiteflies*, Powdery Mildew, Botrytis	Spray for optimum coverage of leaf surfaces. Repeat sprays every 10-14 days. For Powdery Mildew – Make first application pre-bloom and continue every ten days to three weeks depending on level of disease

CROP *Asterisk denotes crop not approved in California.	PESTS *Asterisk denotes pest not approved in California.	TIMING/RESTRICTIONS
		<p>pressure. Use 10-day spray interval when disease conditions are severe. For Botrytis Bunch Rot –Initiate sprays at bloom and repeat prior to bunch closing and véraison. Make a final application at harvest if needed. Oil will remove the bloom on grapes. Restriction: Table grapes must not be sprayed within 60 days of harvest. Restriction: On grapes, do not mix oil and copper more than once/season. Restriction: Do not use copper and oil together with fruit present.</p>
Mango	Mites, Powdery Mildew	<p>Apply every 2-3 weeks as necessary depending on level of pest pressure. For Powdery Mildew – Begin application before bloom. Repeat at bloom and every 2-3 weeks as necessary.</p>
Olives	Olive (Parlatoria) Scale, Oleander Scale, Black Scale	<p>POSTBLOOM THROUGH AUGUST AND AFTER HARVEST: Spray as needed.</p>

CROP *Asterisk denotes crop not approved in California.	PESTS *Asterisk denotes pest not approved in California.	TIMING/RESTRICTIONS
	Mites	PREBLOOM TO POSTBLOOM BUCKSHOT: Spray as needed.
Papaya	Mites, Powdery Mildew, Papaya Ringspot Virus	For Powdery Mildew and Mites: Spray every 10-14 days depending on the level of pest pressure. For Virus: Spray weekly. Initiate spray when seeds are germinated.
Pears	European Fruit Lecanium Scale, Olive Scale, San Jose Scale, European Red Mite Eggs	DORMANT: Spray as needed.
	Pear Psylla	Apply before eggs are laid in early spring.
	Codling Moth*	Use to control first generation early instar stages only.
	Fruit Tree Leafroller, Pear Leaf Blister Mite	DORMANT: Spray as needed.

CROP *Asterisk denotes crop not approved in California.	PESTS *Asterisk denotes pest not approved in California.	TIMING/RESTRICTIONS
	Powdery Mildew	Apply at bud burst and continue every 10-14 days. Use the 10-day spray interval when disease conditions are severe.
	Scales, Two-spotted Spider Mite, Pacific Red Mite, European Red Mite, San Jose Scale and Italian Pear Scale (Summer forms), Leafhopper*, Pear Psylla	FOLIAR SPRAY (Post Bloom): Trees may be sprayed after harvest to maintain control and reduce over-wintering inoculum. Do not apply oil to sensitive varieties.
Pineapple	Mealybugs, Bud Moth, Chinese Rose Beetle	Spray as needed.
Plums Prunes	Black Scale, European Fruit Lecanium Scale, Frosted Scale, Olive Scale, San Jose Scale, Brown Mite Eggs, European Red Mite Eggs, Aphids Eggs, Fruit Tree Leafroller Eggs, Tent Caterpillars*	DORMANT AND DELAYED DORMANT: Spray as needed. Preferred times of application for European Fruit Lecanium Scale and European Red Mite Eggs are Green Tip to Delayed Dormant and for San Jose Scale are Dormant, Green Tip to Delayed Dormant.

CROP	PESTS	TIMING/RESTRICTIONS
*Asterisk denotes crop not approved in California.	*Asterisk denotes pest not approved in California.	
	Two-spotted Spider Mite, Pacific Mite, European Red Mite, Brown Mite	<p>FOLIAR SPRAY: Spray as needed.</p> <p>Trees may be sprayed after harvest to maintain control and reduce over-wintering pressure. Do not apply oil to sensitive varieties.</p> <p>Restriction: Certain varieties of plums and prunes may be injured by oil sprays; check for tolerance prior to treatment. Do not apply to trees lacking moisture.</p>
Strawberries	Aphids*, Botrytis, Leafminers*, Mites, Powdery Mildew, Sawfly, Scale, Whiteflies	Spray as needed.

CITRUS (California Only)

Do not exceed a maximum of 4.8 pounds active ingredient per 1,000 square feet in California.			
CROP	PESTS	TIMING	RESTRICTIONS
Grapefruit Lemons Limes Oranges (Navel & Valencia) Tangelos Tangerines	Mites: Citrus Bud, Citrus Flat, Citrus Red, Citrus Rust	<p>Central California: Lemons and Limes: make applications in all months except December through February. Grapefruit: make applications July through October.</p>	Restriction: Do not apply prior to or during a period of excessively high temperatures. Do not apply oil

CROP	PESTS	TIMING	RESTRICTIONS
Other citrus hybrids	Scales: Black, Brown Soft, California Red, Citricola, Purple, Yellow, Red	Navel Oranges: make applications July through September. Valencia Oranges, Tangelos, Tangerines and other citrus hybrids: make applications July through October. Spray as needed.	spray when trees show stress.
	Mites: Citrus Bud, Citrus Flat, Citrus Red, Citrus Rust Scales: Black, Brown Soft, California Red, Citricola, Purple, Yellow, Red	Southern California: Coastal Lemons and Limes: apply May and June and/or September through December. Interior Lemons and Limes: apply in April and May and/or September through November. Grapefruit: make applications July through October. Navel Oranges: make applications July through September. Valencia Oranges, Tangelos, Tangerines and other citrus hybrids: make applications July through October. Spray as needed.	Consult with your local University of California Cooperative Extension Specialist for proper timing and spray program.
	Mites: Citrus Bud, Citrus Flat, Citrus Red, Citrus Rust Scales: Black, Brown Soft, California Red, Citricola, Purple, Yellow, Red	Oxnard Plains Area: Make applications as needed throughout the year.	

CITRUS (Florida and Texas)

Do not exceed a maximum of 3.6 pounds active ingredient per 1,000 square feet in Texas and Florida.

CROP	PESTS	TIMING	RESTRICTIONS
Citrons, Grapefruits, Lemons, Limes, Mandarins, Oranges, Tangelos, Tangerines	Citrus Rust Mite, Spider Mites, Bud Mites, Flat Mites.	Summer spray only. Re-spray as needed.	Precautions in the use of oil include: Do not apply oil spray when trees are wilting. Do not apply oil and sulfur within 3 weeks of each other. Sensitive foliage may be injured. In Florida, consult the Florida Citrus Spray and Dust Schedule, or your Agricultural Experiment Station or State Extension Service Specialist for complete details on the spraying program best suited to your locale. In Texas, consult with your Agricultural Experiment Station or State Extension Specialist for complete details on the spraying program suited to your locale.
Other citrus hybrids	Does not control Citrus Snow Scale.		
DO NOT APPLY TO NAVEL ORANGES.	Whitefly, Blackfly		
	Greasy Spot (Grapefruit)		
	Greasy Spot (all other varieties)		
	Loosening sooty mold		

VEGETABLE GARDENS

CROP *Asterisk denotes crop not approved in California.	PESTS *Asterisk denotes pest not approved in California.	TIMING/ RESTRICTIONS
<p>Asparagus, Beans, Beets, Broccoli, Chinese Broccoli, Broccoli Raab, Brussels Sprouts, Cabbage, Cauliflower, Chinese Cabbage (Bok Choy and Napa), Chinese Mustard Cabbage (Gai Choy), Cavalo Broccoli, Collards, Kale, Kohlrabi, Mizuna, Mustard Greens, Mustard Spinach, Rape Greens, Celery, Chayote, Chinese Waxgourd, Citron Melon, Cucumber, Gherkin, Hyotan, Cucuzza, Hechima, Chinese Okra, Balsam Apple, Balsam Pear, Bitter Melon, Chinese Cucumber, True Cantaloupe, Cantaloupe, Casaba, Crenshaw Melon, Golden Pershaw Melon, Honeydew Melon, Honey Galls, Mango Melon, Persian Melon, Pumpkin, Summer Squash, Winter Squash, Watermelon, Dasheen (Taro)*, Eggplant, Ginger*, Ginseng*, Herbs and Spices* (Curly Leaf Basil, Lemon Balm), Japanese Radish (Daikon)*, Lettuce, Okra*, Peppers, Potatoes, Radishes, Sweet Potatoes</p>	<p>Aphids, Mites, Beetle Larvae, Leafminers, Thrips, Leafhopper, Whitefly, Alternaria Leafspot, Gummy Stem Blight, Powdery Mildew, Rust</p> <p>Cucumber Mosaic Virus, Papaya Ringspot Virus, Pepper Mottle Virus, Potato Leafroll Virus, Potato Virus Y, Tobacco Etch Virus, Watermelon Mosaic Virus 2, Zucchini Yellow Mosaic Virus.</p>	<p>Spray once or twice weekly depending on the rapid growth of the crop and/or vector pressure.</p> <p>Spray as needed.</p>
<p>Chinese Artichoke* (Japanese Artichoke), Cilantro*, Herbs and Spices* (Mexican Oregano, Mint)</p>	<p>Aphids, Mites, Beetle Larvae, Leafminers, Thrips, Leafhopper, Whitefly, Alternaria</p>	<p>Spray once or twice weekly depending on the rapid growth</p>

VEGETABLE GARDENS

CROP	PESTS	TIMING/ RESTRICTIONS
*Asterisk denotes crop not approved in California.	*Asterisk denotes pest not approved in California.	
	Leafspot, Gummy Stem Blight, Powdery Mildew, Rust, Pepper Psyllids, Cucumber Mosaic Virus 2, Papaya Ringspot Virus, Pepper Mottle Virus, Potato Leafroll Virus, Potato Virus Y, Tobacco Etch Virus, Watermelon Mosaic Virus 2, Zucchini Yellow Mosaic Virus	of the crop and/or vector pressure.
Corn (Sweet)	Aphids, Mites, Leafhopper*, Leafminers, Corn Earworm, Rootworm, Armyworm, Whitefly, Cercospora*	Spray as needed.
Tomatoes	Aphids, Mites, Beetle Larvae, Leafminers, Thrips, Leafhopper, Whitefly, Alternaria Leafspot, Gummy Stem Blight, Powdery Mildew, Rust, Tomato Psyllid*, Tomato Pin Worm*, Fruit Worm*, Army Worm*, Horn Worm*, Lygus Bug*, Stink Bug*, Cucumber Mosaic Virus, Papaya Ringspot Virus, Pepper Mottle Virus, Potato Leafroll Virus, Potato Virus Y, Tobacco Etch Virus, Watermelon Mosaic Virus 2, Zucchini Yellow Mosaic Virus	Spray once or twice weekly depending on the rapid growth of the crop and/or vector pressure.

ROSES, FLOWERING SHRUBS & ORNAMENTALS

PLANT	PESTS	TIMING/ RESTRICTIONS
Flowering and Foliage Plants including Roses and Other Flowering Shrubs	Aphids, Adelgids, Eriophyid Mites, Gall Mites, Honey Locust Plant Bug, Lace Bug, Leaf Beetle Larvae, Leafminer (non-larvae), Leafrollers, Mealybugs, Psyllids (immature), Red Mites, Sawfly (larvae), Scales (immature), Spider Mites, Webworms, Whiteflies, Blackspot, Powdery Mildew, Young Caterpillars	Summer (Foliar or Cover): Spray as needed.
Foliage Ornamentals & Bedding Plants	Aphids, Adelgids	Summer (Foliar or Cover): Spray as needed. Application safety during bloom period must be determined for each individual species of plant to be treated by conducting a small test.
Non-Fruit-Bearing Trees: Apple, Cherry, Peach, Pear	Mites	Apply every 10-14 days
	Powdery Mildew	Spray before disease first appears: Apply every 10-14 days.

PLANT	PESTS	TIMING/RESTRICTIONS
Shade Trees** Ornamental Trees** Shrubs (including Conifers, Deciduous and Broadleaf Evergreens & Woody Ornamentals)	Aphids, Adelgids, Eriophyid Mites, Gall Mites, Hemlock Wooly Adelgids, Honey Locust Plant Bug, Lace Bug, Leaf Beetle Larvae, Leafminer (non- larvae), Leafrollers, Mealybugs, Psyllids (immature), Red Mites, Sawfly (larvae), Scales (immature), Spider Mites, Webworms, Whiteflies, Blackspot, Powdery Mildew, Young Caterpillars	Summer (Foliar or Cover): Spray as needed. Use enough spray solution to completely penetrate the leaf canopy and cover both top and bottom of all the leaves and stems until wet but without significant runoff. Fall Dormant applications: Limit use only to: American Red Oak, Japanese Black Pine, Dogwood, Weeping Cherry, Cornelian Cherry, Crabapple, Norway Maple, Purple Plum. Restriction: Do not spray when there is obvious moisture deficit in leaves, or the plant is under stress. This product may cause discoloration of Blue Spruce. Do not use on conifers or ferns not tolerant to oil sprays (e.g. Alberta Dwarf Spruce).

**This product removes the glaucous (blue) bloom from such evergreens as Colorado Blue Spruce and Koster Spruce. Always test spray oil sensitive plants such as Cryptomeria, Smoke Tree, Chamaecyparis, Juniper, Japanese Holly and Spruce. Tendency toward sensitivity: Red Cedar and Douglas Fir.

STORAGE AND DISPOSAL

Do not contaminate water, food or feed by storage or disposal.

Pesticide Storage: Store and transport in an upright position. Keep container tightly closed to prevent evaporation. Do not use, pour, spill or store near heat or open flame. Store in a cool dry area inaccessible to children or pets. **Pesticide Disposal:** *If partly filled* - Call your local solid waste agency for disposal instructions. Never place unused product down any indoor or outdoor drain. **Container Disposal:** *If empty* - Nonrefillable container. Do not reuse or refill this container. Place in trash or offer for recycling if available.

FIRST AID

Have the product container or label with you when calling a poison control center or doctor, or going for treatment. You may also contact SafetyCall® International at:1-833-972-1101 for emergency medical treatment information.

If in Eyes:

- Hold eye open and rinse slowly and gently with water for 15-20 minutes.
- Remove contact lenses, if present, after the first 5 minutes, then continue rinsing eye.
- Call a poison control center or doctor for treatment advice.

Note to Physician: This product contains petroleum distillates and may pose an aspiration pneumonia problem.

For information on pesticide products (including health concerns, medical emergencies, or pesticide incidents), contact SafetyCall® International at 1-833-972-1101.

PRECAUTIONARY STATEMENTS
HAZARDS TO HUMANS AND DOMESTIC ANIMALS

CAUTION: Causes moderate eye irritation. Avoid contact with eyes or clothing. Wash thoroughly with soap and water after handling and before eating, drinking, chewing gum or using tobacco. Wear long-sleeved shirt, long pants, shoes, socks and waterproof gloves when using or handling this product.

ENVIRONMENTAL HAZARDS

This product is toxic to fish. To protect the environment, do not allow pesticide to enter or run off into storm drains, drainage ditches, gutters or surface waters. Applying this product in calm weather when rain is not predicted for the next 24 hours will help to ensure that wind or rain does not blow or wash pesticide off the treatment area. Rinsing application equipment over the treated area will help avoid run off to water bodies or drainage systems. Apply this product only as specified on the label.

WARRANTY

Seller warrants that this product complies with the specifications expressed in this label. To the extent consistent with applicable law, Seller makes no other warranties, and disclaims all other warranties, express or implied, including but not limited to warranties of merchantability and fitness for the intended purpose. To the extent consistent with applicable law, Seller's liability or default, breach or failure under this label shall be limited to the amount of the purchase price. To the extent consistent with applicable law, Seller shall have no liability for consequential damages.

THIS PAGE LEFT INTENTIONALLY BLANK

THIS PAGE LEFT INTENTIONALLY BLANK

THIS PAGE LEFT INTENTIONALLY BLANK

THIS PAGE LEFT INTENTIONALLY BLANK

TRUSTED SINCE 1926

BONIDE[®]

ACTIVE INGREDIENT:

Mineral oil*.....98%

OTHER INGREDIENTS:.....2%

TOTAL.....100%

*Contains petroleum distillates

**KEEP OUT OF REACH OF CHILDREN
CAUTION**

See attached booklet for complete Directions for Use and Precautionary Statements.

FIRST AID

Have the product container or label with you when calling a poison control center or doctor, or going for treatment. You may also contact SafetyCall® International for emergency medical treatment at 1-833-972-1101.

If in Eyes: Hold eye open and rinse slowly and gently with water for 15-20 minutes. Remove contact lenses, if present, after the first 5 minutes, then continue rinsing eye. Call a poison control center or doctor for treatment advice

Note to Physician: This product contains petroleum distillates and may pose an aspiration pneumonia problem.

PRECAUTIONARY STATEMENTS

HAZARDS TO HUMANS AND DOMESTIC ANIMALS

CAUTION: Causes moderate eye irritation. Avoid contact with eyes or clothing. Wash thoroughly with soap and water after handling and before eating, drinking, chewing gum or using tobacco. Wear long-sleeved shirt, long pants, shoes, socks and waterproof gloves when using or handling this product.

STORAGE AND DISPOSAL

Do not contaminate water, food or feed by storage or disposal.

Pesticide Storage: Store and transport in an upright position. Keep container tightly closed to prevent evaporation. Do not use, pour, spill or store near heat or open flame. Store in a cool dry area inaccessible to children or pets.

Pesticide Disposal: *If partly filled* – Call your local solid waste agency for disposal instructions. Never place unused product down any indoor or outdoor drain.

Container Disposal: *If empty* – Nonrefillable container. Do not reuse or refill this container. Place in trash or offer for recycling if available.

Bonide Products, LLC
6301 Suttiff Road Oriskany, NY 13424

EPA Reg. No. 4-80
EPA Est. No. 4-NY-1

Lift & Peel Here