



# Tomato & Vegetable

Ready to Use

Controls insects and fungal diseases  
on listed fruits, vegetables & ornamentals

Use up to day before harvest

**ACTIVE INGREDIENTS:**

Sulfur .....	0.20%
Pyrethrins .....	0.01%

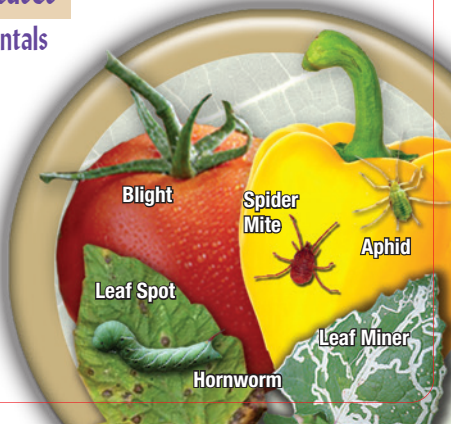
<b>OTHER INGREDIENTS:</b> .....	99.79%
---------------------------------	--------

<b>TOTAL:</b> .....	100.00%
---------------------	---------

EPA Est. No. 4-NY-1 EPA Reg. No. 67702-15-4

**Keep Out Of Reach Of Children**

**CAUTION** (See Back Panel for Additional  
Precautionary Statements)





# Tomato & Vegetable

Ready to Use

- ✓ Controls insects and fungal diseases on listed fruit, vegetables and ornamentals
- ✓ **Kills:** Aphids, mites, spider mites, Beetles, crickets, Ants (excluding fire ants, harvester ants, Pharaoh's ants and carpenter ants), weevils, silverfish, leafhoppers, caterpillars, rose slugs, whiteflies, spittlebugs, mealybugs, scale, thrips, psyllids, plant bugs, lacebugs, fruit flies, and earwigs
- ✓ **Fungal diseases controlled:** blackspot, powdery mildew, rust, scab, blight, brown rot and leaf spot

Manufactured under a license of W. Neudorff GmbH KG, Germany.

EPA Est. No. 4-NY-1 EPA Reg. No. 67702-15-4

©Bonide Products, LLC All Rights Reserved

Distributed by: Bonide Products, LLC

6301 Sutliff Road Oriskany, NY 13424

BN



## **DIRECTIONS FOR USE**

*It is a violation of Federal Law to use this product in a manner inconsistent with its labeling.*

## **BEFORE YOU USE**

### **Use Precautions:**

- Some varieties of grapes and cucurbits are sensitive to sulfur and some plant damage may occur.
- Use care or do not spray on sulfur sensitive plants. If not sure, test spray a few leaves 2 days before spraying the entire plant.

### **Use Restrictions:**

- Do not apply to strawberry fruit that will be used for canning.
- Do not wet plants to point of runoff or drip.
- Do not water the treated areas to point of runoff or drip.
- Do not make applications during rain.
- Not for use in outdoor residential misting systems.
- Do not apply more than 10 times per season.
- Do not reapply within 3 days except under extreme pest pressure.
- In case of extreme pest pressure do not reapply within 24 hours.
- Do not apply more than 1 time per day

- Do not apply more than 18.5 fl. oz. per 100 square feet per application.
- Do not use if temperatures are expected to be over 90°F.
- Do not apply this product in a way that will contact adults, children or pets, either directly or through drift.
- Remove pets, birds, and cover aquariums before spraying.
- Remove or cover exposed food and drinking water before application. Remove or cover dishes, utensils, food processing equipment, and food preparation surfaces, or wash them before use.
- Do not apply directly to or near water, storm drains, or drainage ditches. Do not apply when windy. To prevent product runoff, do not over water treated area or apply prior to heavy rainfall.
- Do not apply directly into sewers or drains, or to any area like a gutter where drainage to storm sewers, water bodies, or aquatic habitat can occur. Do not allow the product to enter any drain during or after application.
- Do not allow adults, children or pets to enter the treated area until sprays have dried.
- Do not spray plants with this product within 21 days of an oil spray.

## HOW TO USE

Shake well before using. Do not dilute.

### **FOR CONTROL OF FUNGAL DISEASES:**

Controls a wide range of fungal diseases including: blackspot, powdery mildew, rust, scab, blight, brown rot and leaf spot. Thoroughly spray all areas of the plant, especially new shoots. For best control apply as a protective spray early in the season before the diseases are noticed. Re-spray every 7 to 10 days or after rain. May be used up to day before harvest.

### **FOR CONTROL OF INSECTS/MITES:**

Controls a wide range of pests including: Ants (excluding fire ants, harvester ants, Pharaoh's ants and carpenter ants), Aphids (including Green Peach Aphids), Armyworms, Bagworms, Beet Armyworm, Beetles (including Asparagus Beetle, Bean Beetles, Blister Beetles, Colorado Potato Beetles, 12-spotted Cucumber Beetles, Cucumber Beetles, Darkling Beetles (lesser mealworm), Saw-toothed Grain Beetles, Elm Leaf Beetles, Flea Beetles, Japanese Beetles, Mexican and Bean Beetles), Blow Flies, Borers (including European Corn Borer, and Squash Vine Borer), Cabbage Looper, Cabbageworms (including Cross-striped Cabbageworm and Imported Cabbageworm), Cankerworms, Caterpillars (including Eastern Tent Caterpillar, Forest Caterpillar and Tent Caterpillar), Crane Flies, Crickets,

Diamondback Moth Larvae, Earwigs, Fireworms, Fungus Gnats, Fruit Flies, Glassy Winged Sharpshooter, Grape Leaf Skeletonizer, Green Fruit Worm, Harlequin Bug, Hornworms including Tomato Hornworm, Katydid, Lace Bugs, Leafhoppers (including Grape Leafhopper, and Potato Leafhoppers), Leafminers, Leaf-tiers, Loopers, Leafrollers (including Fruit-tree Leafrollers), Lygus, Maggots (including Apple Maggot and Onion Maggot), Mealy Bugs, Midges, Millipedes, Mites (including Spider Mites and Clover Mite), Moths (including Artichoke Plume Moth, Codling Moth, Diamondback Moth, European Pine Tip Moth, Gypsy Moth (adults and larvae), Indian Meal Moth and Mediterranean Flour Moth), Mushroom Flies, Navel Orangeworm, Pear Psylla, Plant Bugs, Psyllids, Rose slugs, Scale, Silverfish, Skippers, Sowbugs, Spittlebugs, Squash Bugs, Stink Bugs, Tarnished Plant Bug, Thrips including Greenhouse Thrips, Vinegar Flies, Webworms, Weevils (including Boll Weevil, Carrot Weevil, Clover Weevil and Rice Weevil), Whiteflies.

Thoroughly spray all areas of the plant, especially new shoots and underside of leaves. Pests need to be contacted by the spray to be controlled.

For use only on residential lawns and gardens. Not for use on agricultural establishments growing agricultural crops or commodities for resale.

USE SITE - INDOOR, OUTDOOR AND GREENHOUSE	PEST	DISEASE
FRUIT AND NUT TREES: almond, apple, cherry, citrus, filbert, nectarine, peach, pear, plum, prune, walnut	Ants (excluding fire ants, harvester ants, Pharaoh's ants and carpenter ants), aphids, apple maggot, beetles, mites, moths, spider mites, leafhoppers, leafrollers, leafminers, caterpillars, whiteflies, spittlebugs, mealybugs, scale, thrips, psyllids, plant bugs, fruit flies, earwigs	scab, powdery mildew, rust, blight, brown rot

USE SITE - INDOOR, OUTDOOR AND GREENHOUSE	PEST	DISEASE
VEGETABLE AND VINE PLANTS: beans, beets, blackberries, blueberries, broccoli, brussels sprouts, cabbage, carrots, cauliflower, corn, cucurbits (cucumber, melons, pumpkins and squash), currant, gooseberries, grapes, kale, onions, peas, peppers, potatoes, raspberries, strawberries, tomatoes	Ants (excluding fire ants, harvester ants, Pharaoh's ants and carpenter ants), armyworms, beetles, cabbageworms, squash vine borer, aphids, mites, spider mites, leafhoppers, leafrollers, leafminers, loopers, onion maggots, caterpillars, whiteflies, spittlebugs, mealybugs, scale, thrips, psyllids, plant bugs, fruit flies, earwigs, weevils	powdery mildew, rust, blight, leaf spots



USE SITE - INDOOR, OUTDOOR AND GREENHOUSE	PEST	DISEASE
ORNAMENTALS: flowering plants and shrubs, woody ornamentals, roses, trees and houseplants	Ants (excluding fire ants, harvester ants, Pharaoh's ants and carpenter ants), aphids, beetles, mites, spider mites, leafhoppers, leafrollers, leafminers, armyworms, loopers, caterpillars, roseslugs, whiteflies, spittlebugs, mealybugs, scale, thrips, psyllids, plant bugs, lacebugs, earwigs, weevils	powdery mildew, rust, blight, blackspot, leaf spots
LAWNS	aphids, mites, spider mites, leafhoppers, caterpillars, beetles, spittlebugs, thrips, earwigs	rust, leaf spot, blight, powdery mildew

### STORAGE AND DISPOSAL

**PESTICIDE STORAGE:** Store at room temperature and protect from freezing.

**PESTICIDE DISPOSAL AND CONTAINER HANDLING:** Nonrefillable. Do not reuse or refill this container. **If empty:** Place in trash or offer for recycling if available. **If partly filled:** Call your local solid waste agency for disposal instructions. Never place unused product down any indoor or outdoor drain.

### FIRST AID

**IF ON SKIN  
OR CLOTHING:**

- Take off contaminated clothing.
- Rinse skin immediately with plenty of water for 15-20 minutes.
- Call a poison control center or doctor for treatment advice.

**IF IN  
EYES:**

- Hold eye open and rinse slowly and gently with water for 15-20 minutes.
- Remove contact lenses, if present, after the first 5 minutes, then continue rinsing eye.
- Call a poison control center or doctor for treatment advice.

Have the product container or label with you when calling a poison control center or doctor or going for treatment. For additional information on this pesticide product, you may call the National Pesticide Information Center at 1-800-858-7378 for emergency medical treatment information.

### **PRECAUTIONARY STATEMENTS**

#### **HAZARDS TO HUMANS AND DOMESTIC ANIMALS**

**CAUTION:** Causes moderate eye irritation. Avoid contact with eyes. Avoid contact with skin or clothing. Wash thoroughly with soap and water after handling and before eating, drinking, chewing gum, using tobacco or using the toilet.

#### **User Safety Recommendations**

- Users should wash hands with plenty of soap and water before eating, drinking, chewing gum, using tobacco, or using the toilet.
- Users should remove clothing immediately if pesticide gets inside. Then wash thoroughly and put on clean clothing.

#### **ENVIRONMENTAL HAZARDS**

This product is toxic to aquatic organisms including fish and invertebrates. Do not contaminate water when disposing of equipment, washwater, or rinsate. Do not apply directly to or near water. Drift and run-off may be hazardous to fish in water adjacent to treated areas. See Directions for Use for additional precautions and requirements.

#### **PHYSICAL OR CHEMICAL HAZARDS**

Combustible. Do not use or store near heat or open flame.

### **NOTICE TO BUYER**

To the extent consistent with applicable law, buyer assumes all responsibility for safety and use not in accordance with directions.